

PENSACOLA, FLORIDA

RNAV (GPS) RWY 19

APCH CRS	Rwy Idg	7136
187°	TDZE	22
	Arpt Elev	28

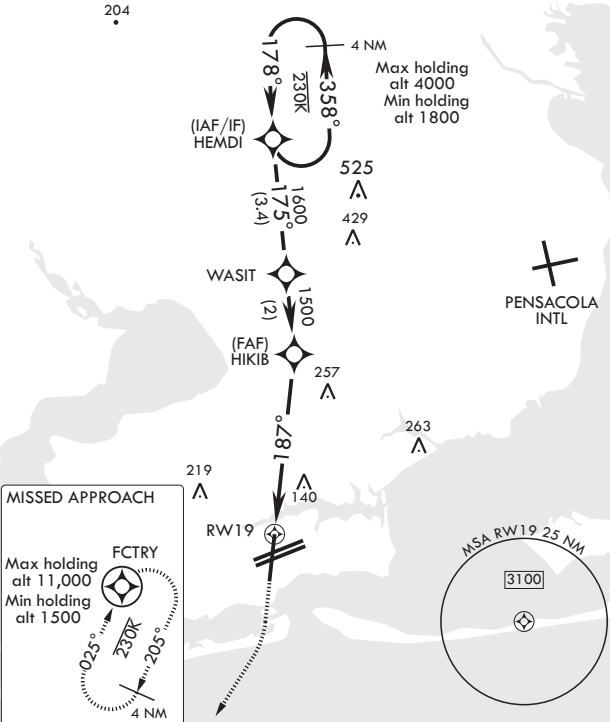
AL-736 (USN)

PENSACOLA NAS (FORREST SHERMAN FLD) (KNPA)

		MISSED APPROACH: Climb to 800 then climbing right turn to 1500 direct FCTRY and hold.			
ATIS	APP CON	SHERMAN TOWER	SHERMAN GND CON	SHERMAN CLNC DEL	ASR/PAR
124.35 266.8	120.65 270.8	120.7 340.2	121.7 336.4	134.1 268.7	

DME/DME RNP-0.3 NA

For uncompensated  
Baro-VNAV systems,  
Procedure NA below -15°C  
(5°F) or above 54°C (130°F).



RADAR REQUIRED  
EMERG SAFE ALT 100 NM 3100

							ELEV 28	TDZE 22
*LNAV only		*1.4 NM to RWY19		HEMDI		1800		
RWY19		HIKIB		WASIT		1600		
4.5 NM		187°		175°		178°		
		1500		358°		4 NM holding pattern		
CATEGORY	A	B	C	D	E	GP 3.00° TCH 56		
LNAV/VNAV DA	469-1 3/8		447		(500-1 3/8)			
LNAV MDA	520-1 498 (500-1)		520-1 3/8 498		(500-1 3/8)			
CIRCLING	520-1 492 (500-1)		540-1 1/2 512 (600-1 1/2)		580-2 552 (600-2)			

PENSACOLA, FLORIDA

30°21'N - 87°19'W PENSACOLA NAS (FORREST SHERMAN FLD) (KNPA)

Amtrd 4 02JAN20

RNAV (GPS) RWY 19

SE-3, 31 DEC 2020 to 28 JAN 2021

SE-3, 31 DEC 2020 to 28 JAN 2021