

PENSACOLA, FLORIDA

APCH CRS	Rwy Idg	8000
069°	TDZE	25
	Arprt Elev	28

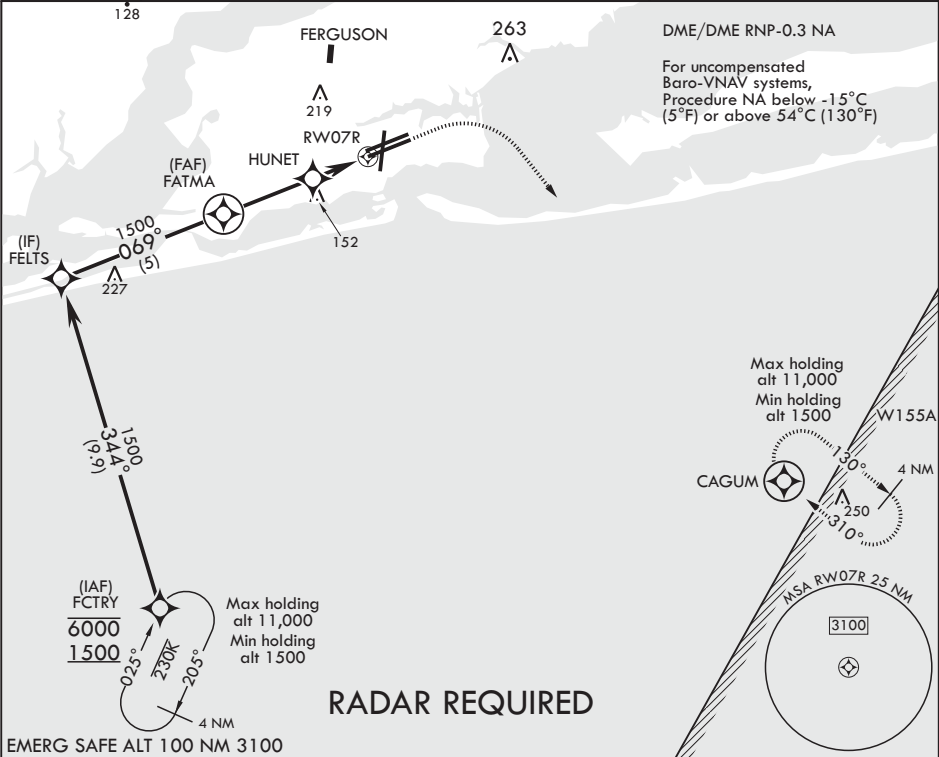
AL-736 (USN)

RNAV (GPS) RWY 7R

PENSACOLA NAS (FORREST SHERMAN FLD) (KNPA)

	MISSED APPROACH: Climb to 800 then climbing right turn to 1500 direct CAGUM and hold.				
--	---	--	--	--	--

ATIS 124.35 266.8	APP CON 120.65 270.8	SHERMAN TOWER 120.7 340.2	SHERMAN GND CON 121.7 336.4	SHERMAN CLNC DEL 134.1 268.7	ASR/PAR
----------------------	-------------------------	------------------------------	--------------------------------	---------------------------------	---------



† LNAV only					800	1500	CAGUM	ELEV 28	TDZE 25
FCTRY					6000	1500	344°	069°	FATMA
GP 3.00°					1500	1500	1500	1500	HUNET
TCH 56					*LNAV only				
					*1 NM to RW07R				
					*620				
					2.8 NM				
					1.7 NM				
CATEGORY	A	B	C	D	E				
LNAV/VNAV DA	275-¾ 250 (300-¾)	285-¾ 260 (300-¾)	293-¾ 268 (300-¾)	304-¾ 279 (300-¾)	312-¾ 287 (300-¾)				
LNAV MDA	400-1		375	(400-1)					
CIRCLING	520-1	492 (500-1)	540-1½ 512 (600-1½)	580-2	552 (600-2)				

BCN TWR 116

6L

8001 x 200

8000 x 200

7136 x 200

717R

069° to RW07R

214

255

25

HIRL all Rwys

REIL all Rwys

PENSACOLA, FLORIDA

30°21'N - 87°19'W PENSACOLA NAS (FORREST SHERMAN FLD) (KNPA)

Amdt 1 20JUN19

RNAV (GPS) RWY 7R

SE-3, 31 DEC 2020 to 28 JAN 2021

SE-3, 31 DEC 2020 to 28 JAN 2021