

TACAN RWY 1

TACAN NPA Chan 119	APCH CRS 012°	Rwy Idg 7136 TDZE 28 Arpt Elev 28
------------------------------	-------------------------	--

AL-736 [USN]

PENSACOLA NAS (FORREST SHERMAN FLD) (KNPA)

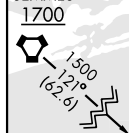


MISSED APPROACH: Climbing right turn to 1500 via NPA
TACAN R-130 to CAGUM and hold.

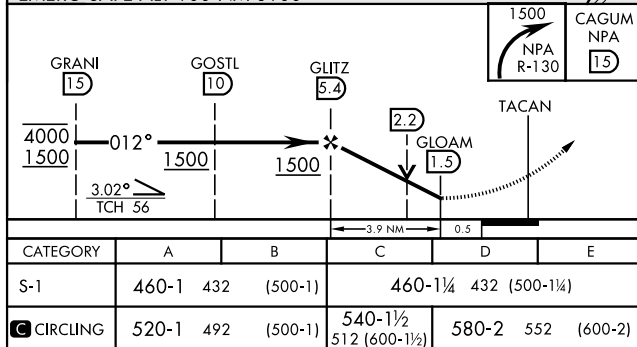
ATIS 124.35 266.8	PENSACOLA APP CON 120.65 270.8	SHERMAN TOWER 120.7 340.2	GND CON 121.7 336.4	CLNC DEL 134.1 268.7	ASR/ PAR
----------------------	-----------------------------------	------------------------------	------------------------	-------------------------	-------------

CAUTION: Intermediate seg length 4.6 NM

SEMMES



RADAR REQUIRED
EMERG SAFE ALT 100 NM 3100

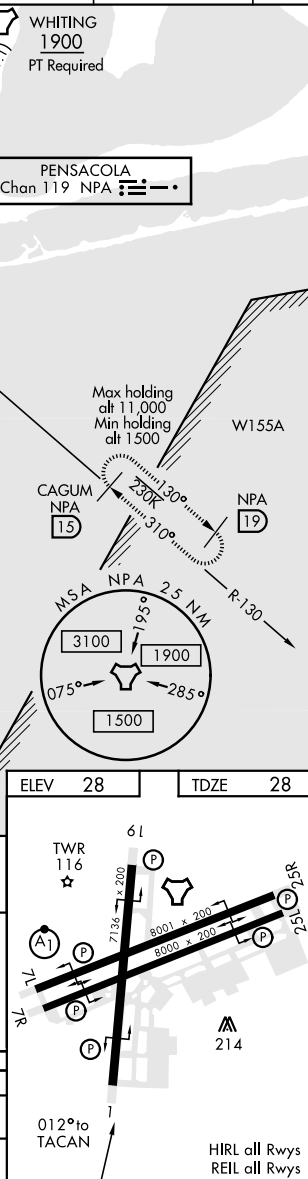


PENSACOLA, FLORIDA

30°21'N-87°19'W

PENSACOLA NAS (FORREST SHERMAN FLD) (KNPA)

Amdt 5 02JAN20



SE-3, 31 DEC 2020 to 28 JAN 2021

TACAN RWY 1