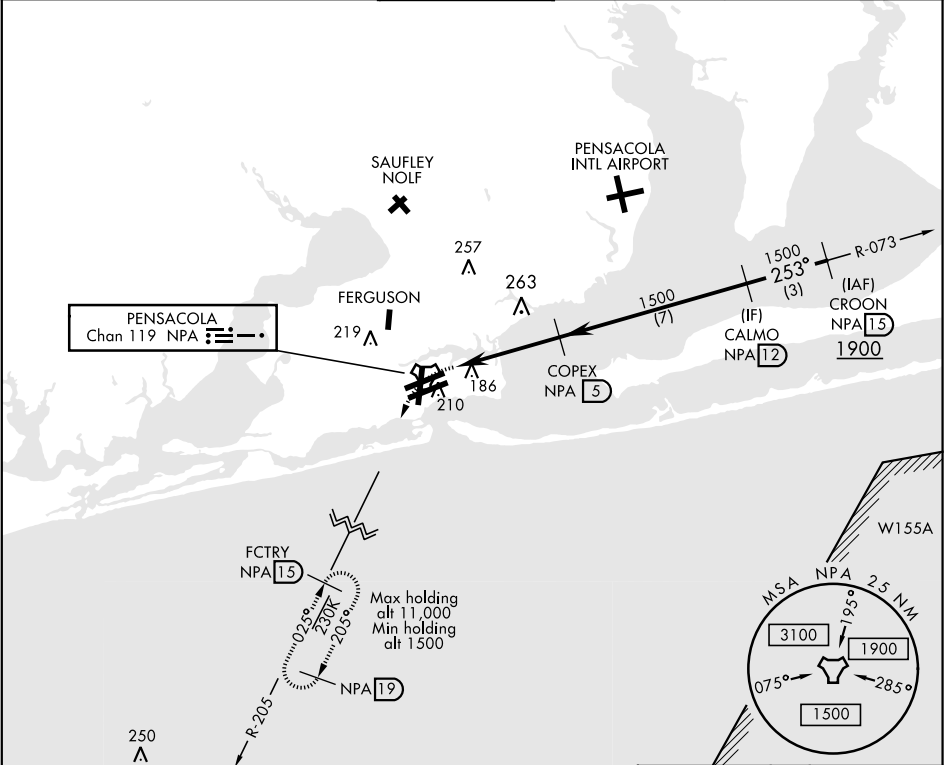


TACAN RWY 25R

TACAN NPA Chan 119	APCH CRS 253°	Rwy ldg 8001 TDZE 21 Arprt Elev 28	AL-736 [USN]	TACAN R-205 to FCTRY and hold.		
PENSACOLA NAS (FORREST SHERMAN FLD) (KNPA)						
MISSED APPROACH: Climbing left turn to 1500 via NPA TACAN R-205 to FCTRY and hold.						
ATIS 124.35 266.8	PENSACOLA APP CON 120.65 270.8	SHERMAN TOWER 120.7 340.2	GND CON 121.7 336.4	CLNC DEL 134.1 268.7	ASR/ PAR	

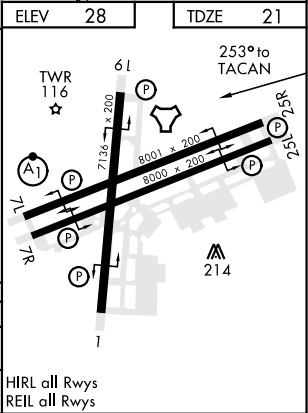


EMERG SAFE ALT 100 NM 3100						ELEV 28	TDZE 21
1500 NPA R-205	FCTRY NPA 15		COPEX 5	CALMO 12	CROON 15		
TACAN			253°		1900		
CUKUB 1.1			1500	1500			
0.5			3.9 NM		3.03° TCH 56		
CATEGORY	A	B	C	D	E		
S-25R	440-1	419 (500-1)	440-1½ 419 (500-1½)				
CIRCLING	520-1	492 (500-1)	540-1½ 512 (600-1½)	580-2	552 (600-2)		

Diagram illustrating the approach procedure. Key features include:

- Heading: 253° to TACAN
- Glide Slope: 3.03° (TCH 56)
- Altitudes: 1500, 1900, 253° to TACAN
- Distances: 0.5, 3.9 NM
- Obstacles: TWR 116, 61, 214
- Other: 8001 x 200, 8000 x 200, 7134 x 200

HIRL all Rwy's
REIL all Rwy's



TACAN RWY 25R

SE-3, 31 DEC 2020 to 28 JAN 2021

SE-3, 31 DEC 2020 to 28 JAN 2021