

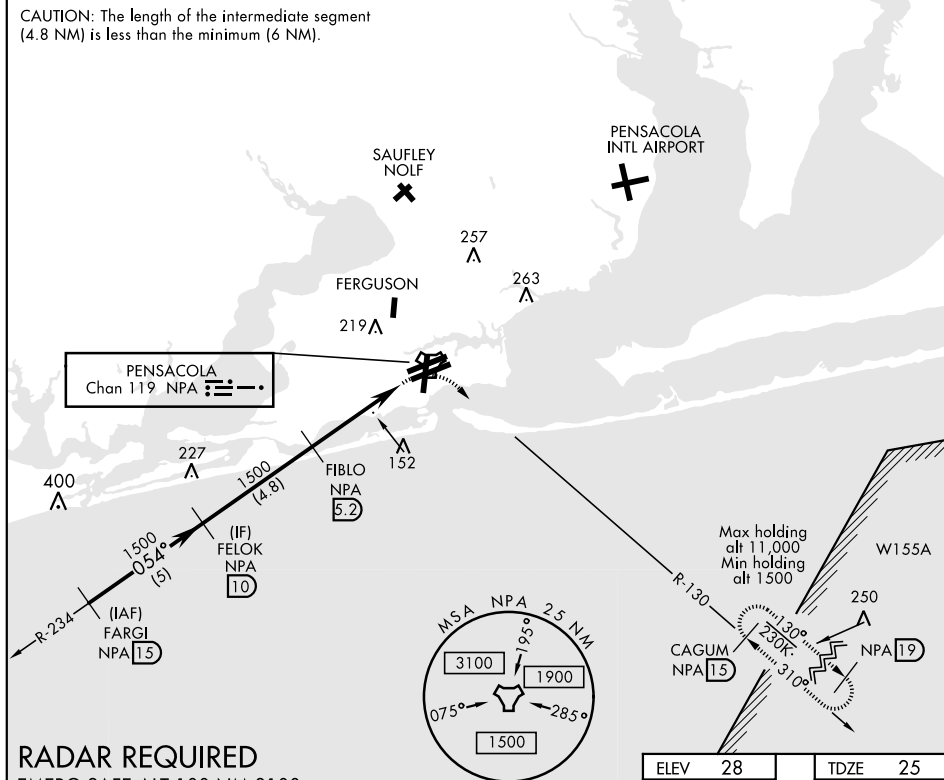
TACAN NPA Chan 119	APCH CRS 054°	Rwy Idg 8000 TDZE 25 Arpt Elev 28
------------------------------	-------------------------	--

AL-736 [USN]

PENSACOLA NAS (FORREST SHERMAN FLD) (KNPA)

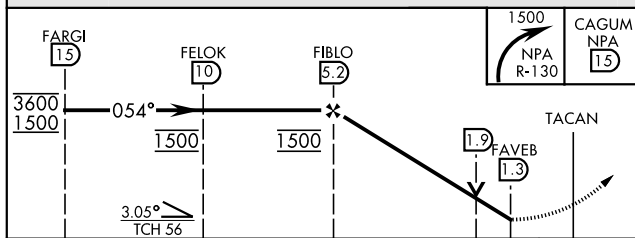
V		MISSED APPROACH: Climbing right turn to 1500 via NPA TACAN R-130 to CAGUM and hold.			
ATIS 124.35 266.8	PENSACOLA APP CON 120.65 270.8	SHERMAN TOWER 120.7 340.2	GND CON 121.7 336.4	CLNC DEL 134.1 268.7	ASR/ PAR

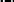
CAUTION: The length of the intermediate segment (4.8 NM) is less than the minimum (6 NM).



RADAR REQUIRED

EMERG SAFE ALT 100 NM 3100



					3.9 NM		0.5	
CATEGORY	A		B	C	D	E		
S-7R	440-1	415	(500-1)	440-1 $\frac{1}{8}$		415	(500-1 $\frac{1}{8}$)	
 CIRCLING	520-1	492	(500-1)	540-1 $\frac{1}{2}$		512	(600-1 $\frac{1}{2}$)	
	580-2	552	(600-2)					

