

VOR RWY 19

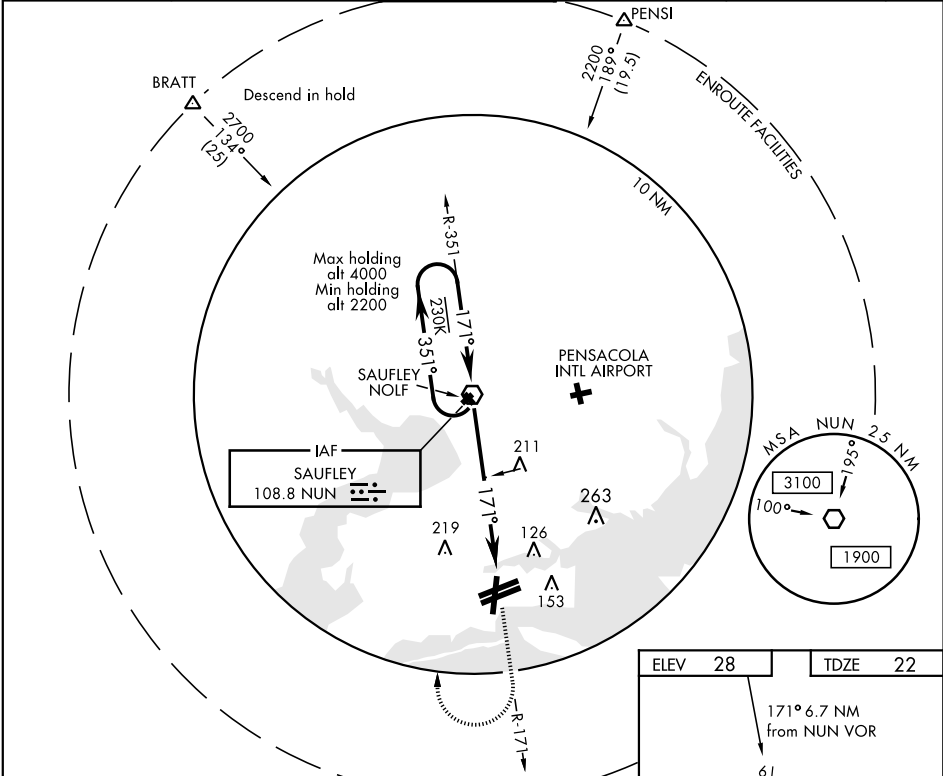
VOR NUN 108.8	APCH CRS 171°	Rwy Idg 7136 TDZE 22 Arprt Elev 28
------------------	------------------	---

AL-736 [USN]

PENSACOLA NAS (FORREST SHERMAN FLD) (KNPA)

MISSED APPROACH: Climb to 2200 via NUN R-171. Then turn right direct NUN VOR and hold. Remain within 15 NM of NUN VOR.
--

ATIS 124.35 266.8	PENSACOLA APP CON 120.65 270.8	SHERMAN TOWER 120.7 340.2	GND CON 121.7 336.4	CLNC DEL 134.1 268.7	ASR/ PAR
----------------------	-----------------------------------	------------------------------	------------------------	-------------------------	-------------



VOR
171° ← 351° →
2200
3.00° TCH 56

NUN R-171
2200
Within 15 NM
NUN 108.8

CATEGORY	A	B	C	D
S-19	540-1 518 (600-1)	540-1 518 (600-1)	540-1 518 (600-1)	540-1 518 (600-1)
CIRCLING	540-1 512 (600-1)	540-1 512 (600-1)	540-1 512 (600-1)	580-2 552 (600-2)

ELEV 28 **TDZE 22**

TWR 116

171° 6.7 NM from NUN VOR

61

104

251

214

7136

8001 ± 200

8000 ± 200

1

HIRL all Rwy's
REIL all Rwy's

FAF to MAP 6.0 NM

Knots	60	90	120	150	180
Min:Sec	6:00	4:00	3:00	2:24	2:00

SE-3, 31 DEC 2020 to 28 JAN 2021

SE-3, 31 DEC 2020 to 28 JAN 2021