

LOC/DME I-LHI	APP CRS	Rwy Idg	8424
110.1	096°	TDZE	7
Chan 38		Apt Elev	65

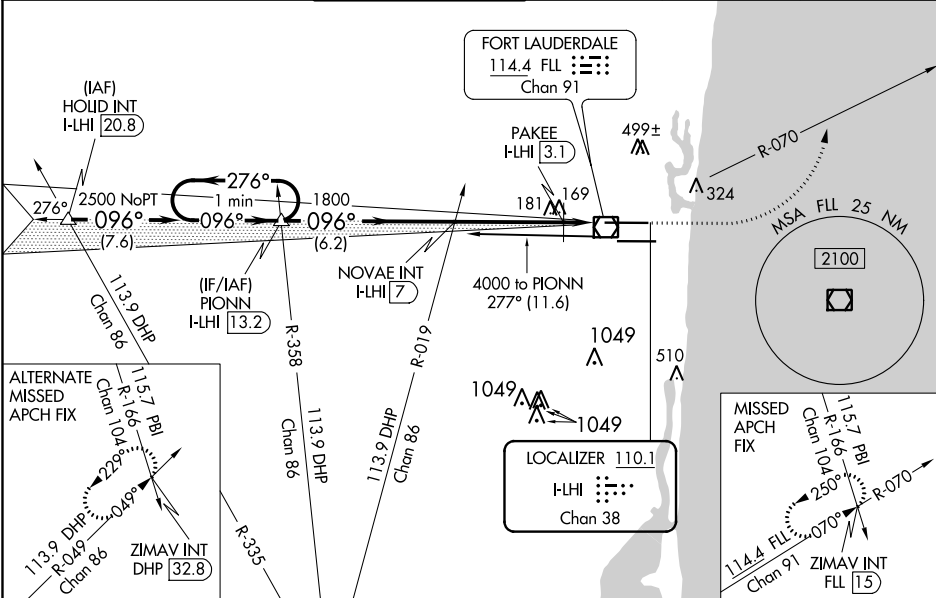
ILS or LOC RWY 10L
FORT LAUDERDALE/HOLLYWOOD INTL (FLL)

⚠ Inop table does not apply to S-ILS 10L all Cats. For inop MALSR, increase S-LOC 10L Cats A, B visibility to RVR 5000 and Cats C, D visibility to 1½ miles. PAKEE Fix Minimums: increase S-LOC 10L all Cats visibility to RVR 5500. Rwy 10L helicopter visibility reduction below RVR 4000 NA. Simultaneous approach authorized.

MALSR
A5

MISSED APPROACH: Climb to 800 then climbing left turn to 2000 on FLL VOR/DME R-070 to ZIMAV INT/FLL 15 DME and hold.

D-ATIS 135.0	MIAMI APP CON 133.775 285.6	FORT LAUDERDALE TOWER 119.3 257.8	GND CON 121.4	CLNC DEL 128.4	CPDLC
-----------------	--------------------------------	--------------------------------------	------------------	-------------------	-------



VGSI and ILS glidepath not coincident (VGSI Angle 3.00/TCH 66).

One Minute Holding Pattern

PIONNN I-LHI (13.2)

NOVAE INT I-LHI (7)

PAKEE I-LHI (3.1)

*LOC only.

GS 3.00° TCH 48

2500 ← 276°

096° →

1800

*560

6.2 NM 3.9 NM 0.6 NM 1 NM

CATEGORY	A	B	C	D
S-ILS 10L	257/40 250 (200-¾)			
S-LOC 10L	560/40	553 (500-¾)	560/60	553 (500-1¼)
CIRCLING	680-1	615 (700-1)	800-2¼ 735 (800-2¼)	800-2½ 735 (800-2½)
PAKEE FIX MINIMUMS (DME REQUIRED)				
S-LOC 10L	380/40 373 (400-¾)			
CIRCLING	680-1	615 (700-1)	800-2¼ 735 (800-2¼)	800-2½ 735 (800-2½)

ELEV 65 TDZE 7

ZIMAV INT

096° 5.5 NM from FAF

66

10L

10R

28R

28L

9000 X 150

8000 X 150

194

10R

10L

28R

28L

UP 0.4%

DOWN 1.0%

HIRL Rwy 10L-28R and 10R-28L

FAF to MAP 5.5 NM

Knots	60	90	120	150	180
Min:Sec	5:30	3:40	2:45	2:12	1:50

SE-3, 31 DEC 2020 to 28 JAN 2021

SE-3, 31 DEC 2020 to 28 JAN 2021