
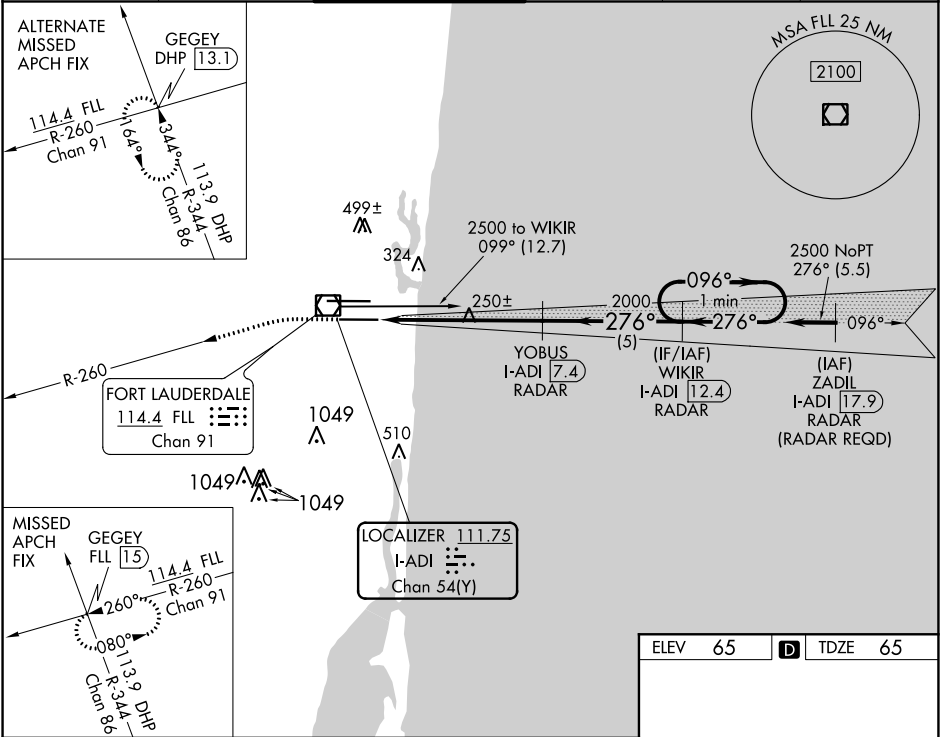


LOC/DME I-ADI	APP CRS	Rwy Idg	8000
<b>111.75</b>	<b>276°</b>	TDZE	<b>65</b>
Chan <b>54(Y)</b>		Apt Elev	<b>65</b>

ILS or LOC RWY 28L  
FORT LAUDERDALE/HOLLYWOOD INTL (FLL)

<div><div>▼</div><div>▲</div></div>	DME or RADAR Required. Simultaneous approach authorized. Inop table does not apply to S-ILS 28L. For inop ALS, increase S-LOC 28L Cat D visibility to 1 ¼ SM.		MALSF 	MISSED APPROACH: Climb to 1000 then climbing left turn to 4000 on FLL VOR/DME R-260 to GEGEY INT/FLL 1.5 DME and hold, continue climb-in-hold to 4000.	
D-ATIS 135.0	MIAMI APP CON 133.775 285.6	FORT LAUDERDALE TOWER 119.3 257.8	GND CON 121.4	CLNC DEL 128.4	CPDLC



1000	4000	FLL R-260	GEGEY INT	VGSI and ILS glidepath not coincident (VGSI Angle 3.00/TCH 69).			
*LOC only.				YOBUS I-ADI [7.4] RADAR	WIKIR I-ADI [12.4] RADAR	One Minute Holding Pattern	
				2000	276°	096°	2500
				I-ADI [1.5]	*I-ADI [2.6]	GS 3.00° TCH 53	
				1.2 NM	4.7 NM	5 NM	
CATEGORY	A	B	C	D			
S-ILS 28L	265/40			200 (200-3/4)			
S-LOC 28L	500/40	435 (500-3/4)	500/50	435 (500-1)			
CIRCLING	680-1	615 (700-1)	800-2	800-2 1/4	735 (800-2)	735 (800-2 1/4)	

