

APP CRS	Rwy Idg	8394
276°	TDZE	7
	Apt Elev	9

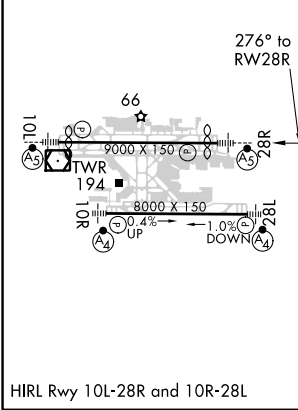
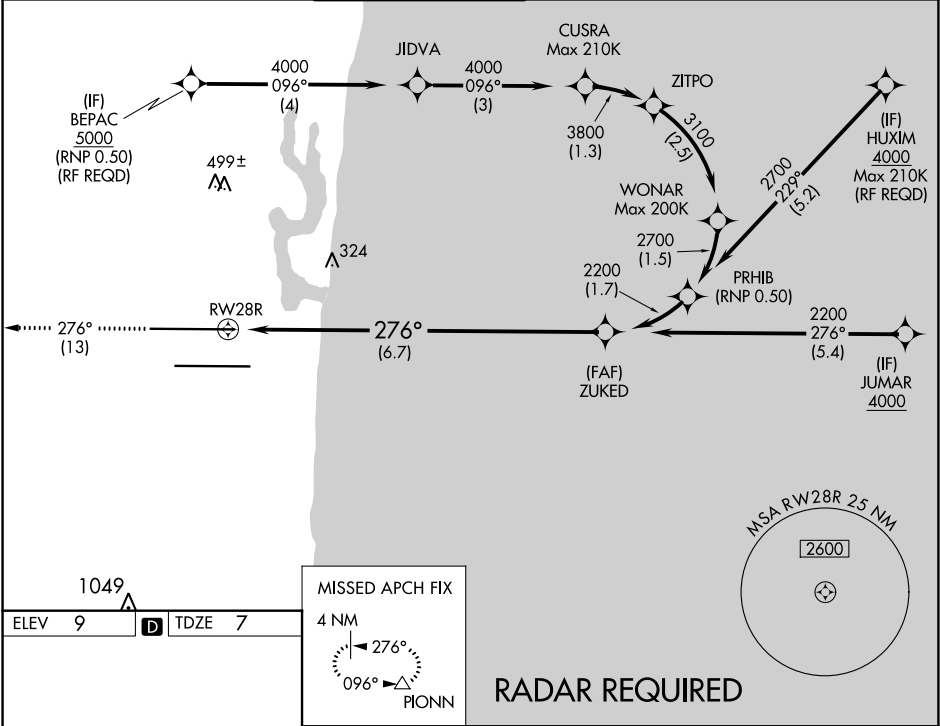
RNAV (RNP) Z RWY 28R
FORT LAUDERDALE/HOLLYWOOD INTL (FLL)

For uncompensated Baro-VNAV systems, procedure NA below 5°C (40°F) or above 54°C (130°F). GPS Required. Inop table does not apply.

MALSR

MISSED APPROACH: Climb to 4000 on track 276° to PIONN and hold, continue climb-in-hold to 4000.

D-ATIS	MIAMI APP CON	FORT LAUDERDALE TOWER	GND CON	CLNC DEL	CPDLC
135.0	133.775 285.6	119.3 257.8	121.4	128.4	



4000	PIONN	VGSI and RNAV glidepath not coincident (VGSI Angle 3.00/TCH 69).	ZUKED	2200
tr 276°	△			
See planview for multiple IF locations.				
RW28R				
276°				
6.7 NM				
GP 3.00° TCH 49				
CATEGORY	A	B	C	D
RNP 0.15 DA	405-1 ³ / ₈	398 (400-1 ³ / ₈)		
RNP 0.30 DA	627-1 ³ / ₈	620 (700-1 ³ / ₈)		
AUTHORIZATION REQUIRED				

SE-3, 31 DEC 2020 to 28 JAN 2021

SE-3, 31 DEC 2020 to 28 JAN 2021