

LOC/DME I-OOS 111.55 Chan 52 (Y)	APP CRS 095°	Rwy ldg 5000 TDZE 39 Apt Elev 55
--	------------------------	---

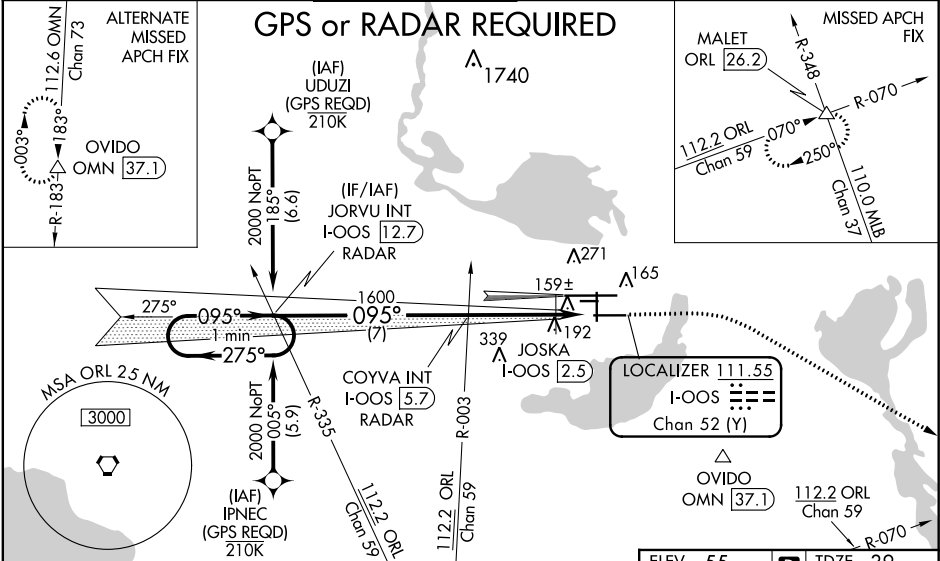
ILS or LOC RWY 9R
ORLANDO SANFORD INTL (SF'B)

⚠ When local altimeter setting not received, use Executive altimeter setting and increase S-ILS DA to 282, and all MDA 60 feet; increase S-LOC 9R Cat C, D visibility ¼ mile, Circling Cat C visibility ½ mile and JOSKA fix minimums S-LOC 9R Cats C, D visibility ¼ mile. Simultaneous approach authorized with Rwy 9L. Night landing: Rwy 27C NA.

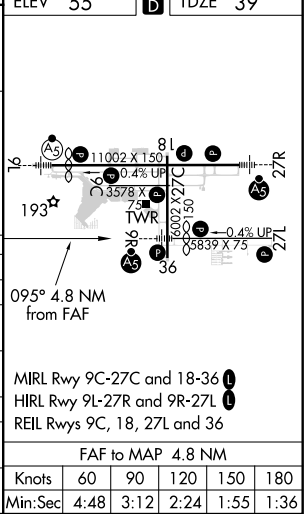
MALSR

MISSED APPROACH: Climb to 500 then climbing right turn to 2800 on heading 125° and ORL VORTAC R-070 to MALET INT/ORL 26.2 DME and hold.

ATIS 125.975	ORLANDO APP CON 135.3 351.9 (NORTH) 119.775 351.9 (SOUTH)	SANFORD TOWER★ 120.3 (CTAF) 0 254.35	GND CON 121.35 254.35	CLNC DEL 123.975	CLNC DEL 121.35 (when twr closed)
------------------------	---	--	---------------------------------	----------------------------	--



--	--



SE-3, 31 DEC 2020 to 28 JAN 2021

SE-3, 31 DEC 2020 to 28 JAN 2021