

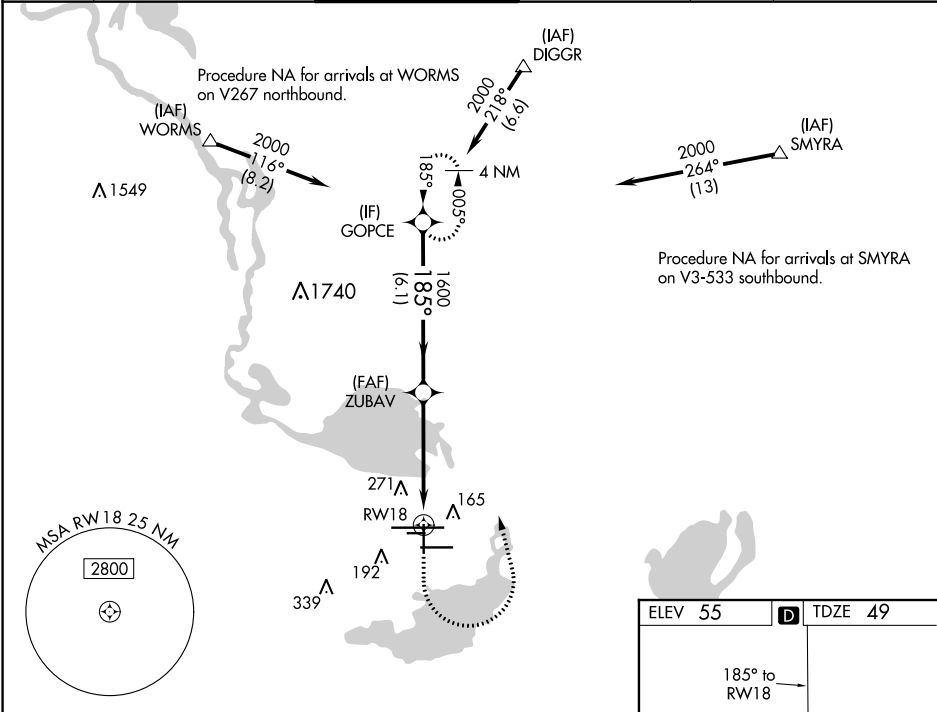
WAAS CH 45923 W18A	APP CRS 185°	Rwy Idg 5956 TDZE 49 Apt Elev 55
--	------------------------	---

RNAV (GPS) RWY 18
ORLANDO SANFORD INTL (SF'B)

▼ Night Landing: Rwy 27C NA. Baro-VNAV NA when using Executive altimeter setting.
▲ For uncompensated Baro-VNAV systems, LNAV/VNAV NA below -15°C (5°F) or above 43°C (109°F). DME/DME RNP-0.3 NA. VDP NA with Executive altimeter setting.
When local altimeter setting not received, use Executive altimeter setting: Increase LPV DA to 292 feet; increase LNAV/VNAV DA to 342 feet and all visibilities ¼ SM; increase all MDAs 60 feet and visibility Cats C and D ¼ SM.

MISSED APPROACH: Climb to 600 then climbing left turn to 2100 direct GOPCE and hold.

ATIS 125.975	ORLANDO APP CON 135.3 351.9 (NORTH) 119.775 351.9 (SOUTH)	SANFORD TOWER★ 120.3(CTAF) 0 254.35	GND CON 121.35 254.35	CLNC DEL 123.975	CLNC DEL 121.35 (when twr closed)
------------------------	---	---	---------------------------------	----------------------------	--



ELEV 55		D TDZE 49	
185° to RW18		193	
11002 X 150		81	
3578 X 150		76	
16002 X 277		27R	
65839 X 75		27L	
36		36	

GOPCE		ZUBAV		RW18	
2000		1600		1600	
185°		1600		1600	
GP 3.00°		1600		1600	
TCH 45		1600		1600	
6.1 NM		3.5 NM		1.2	
A		B		C	
LPV DA		249-¾		200 (200-¾)	
LNAV/VNAV DA		299-¾		250 (300-¾)	
LNAV MDA		480-1		431 (500-1)	
480-1		431 (500-1)		480-1¼	
600-1½		545 (600-1½)		640-2	
580-1		525 (600-1)		585 (600-2)	
CIRCLING		580-1		525 (600-1)	

MIRL Rwy 9C-27C and 18-36

HIRL Rwy 9L-27R and 9R-27L

REIL Rwy 9C, 18, 27L and 36

SE-3, 31 DEC 2020 to 28 JAN 2021

SE-3, 31 DEC 2020 to 28 JAN 2021