

WAAS CH 63209 W27A	APP CRS 275°	Rwy Idg 11002 TDZE 45 Apt Elev 55
--	------------------------	--

RNAV (GPS) RWY 27R
ORLANDO SANFORD INTL (SF'B)

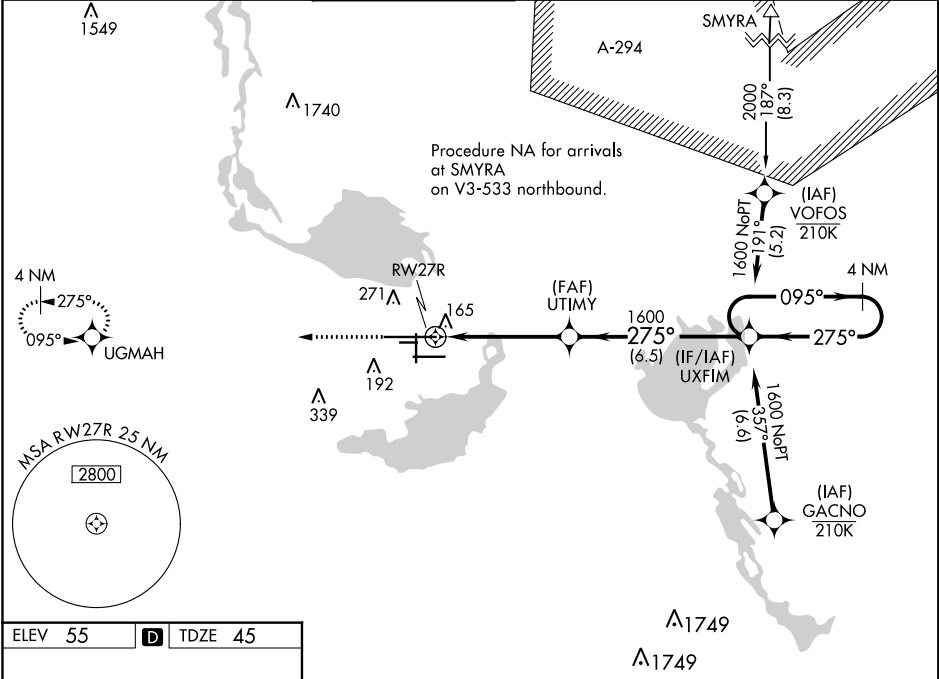
▼

For uncompensated Baro-VNAV systems, LNAV/VNAV NA below 0°C (32°F) or above 54°C (130°F). DME/DME RNP-0.3 NA.
For inop ALS, increase LNAV/VNAV all Cats visibility to 1¼ SM, increase LNAV Cat C/D visibility to 1 SM.

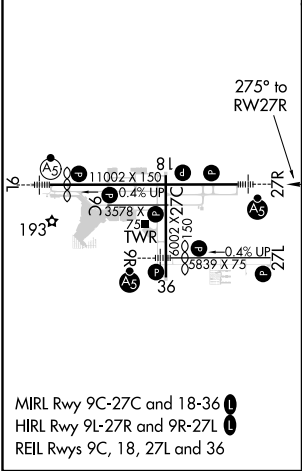
MALSR

MISSED APPROACH:
Climb to 2000 direct UGMAH and hold.

ATIS 125.975	ORLANDO APP CON 135.3 351.9 (NORTH) 119.775 351.9 (SOUTH)	SANFORD TOWER★ 120.3 (CTAF) 0 254.35	GND CON 121.35 254.35	CLNC DEL 123.975	CLNC DEL 121.35 (when twr closed)
------------------------	---	--	---------------------------------	----------------------------	--



ELEV 55	D	TDZE 45
----------------	----------	----------------



2000 UGMAH				
VGSI and RNAV glidepath not coincident (VGSI Angle 3.00/TCH 72).				
*LNAV only.				
*1.1 NM to RWY 27R				
GP 3.00° TCH 55				
CATEGORY	A	B	C	D
LPV DA	245-½ 200 (200-½)			
LNAV/VNAV DA	425-⅞ 380 (400-⅞)			
LNAV MDA	420-½	375 (400-½)	420-⅝	375 (400-⅝)
CIRCLING	580-1	525 (600-1)	600-1½ 545 (600-1½)	640-2 585 (600-2)