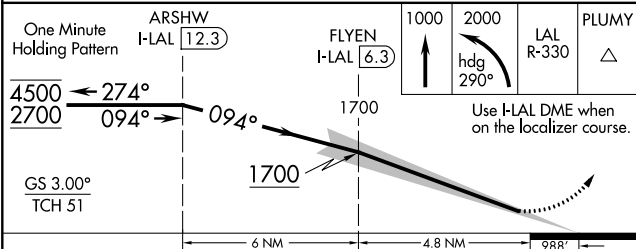
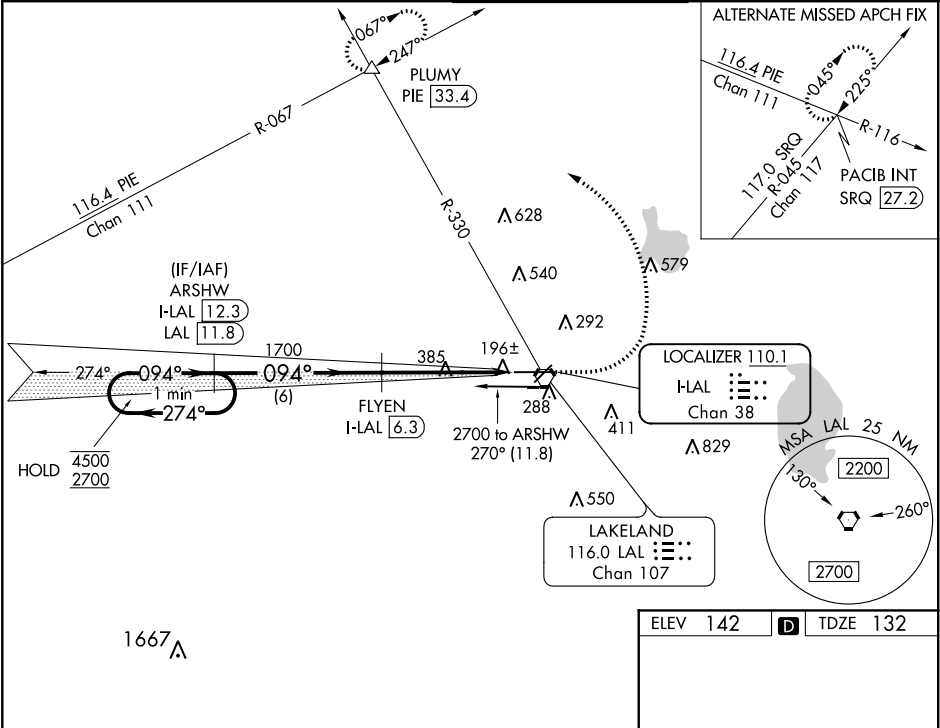


LOC/DME I-LAL 110.1 Chan 38	APP CRS 094°	Rwy Idg TDZE Apt Elev	8414 132 142
---	------------------------	-----------------------------	---

ILS RWY 9 (SA CAT I & II)
LAKELAND UNDER INTL (LAL)

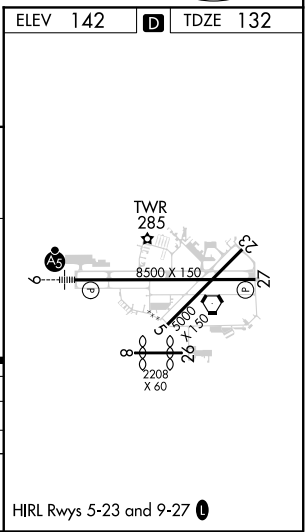
DME required.	MALSR	MISSED APPROACH: Climb to 1000 then climbing left turn to 2000 on heading 290° and on LAL VORTAC R-330 to PLUMY INT/PIE 33.4 DME and hold.
▼ SA CAT I: Requires specific OPSPEC, MSPEC or LOA approval and use of HUD to DH. ▲ SA CAT II: Reduced lighting: Requires specific OPSPEC, MSPEC or LOA approval and use of HUD to touchdown. Autopilot coupled approach NA. SA CAT I/II: Procedure NA when tower closed.		

ATIS 118.025	TAMPA APP CON 120.65 290.3	LAKELAND TOWER 124.5 (CTAF) 0 236.775	GND CON 121.4
------------------------	--------------------------------------	---	-------------------------



CATEGORY	A	B	C	D
S-ILS 9	SA CAT I	RA 152/14	150	DA 282
S-ILS 9	SA CAT II	RA 102/12	100	DA 232

SA CATEGORY I & II ILS SPECIAL AIRCREW & AIRCRAFT CERTIFICATION REQUIRED



SE-3, 31 DEC 2020 to 28 JAN 2021

SE-3, 31 DEC 2020 to 28 JAN 2021