

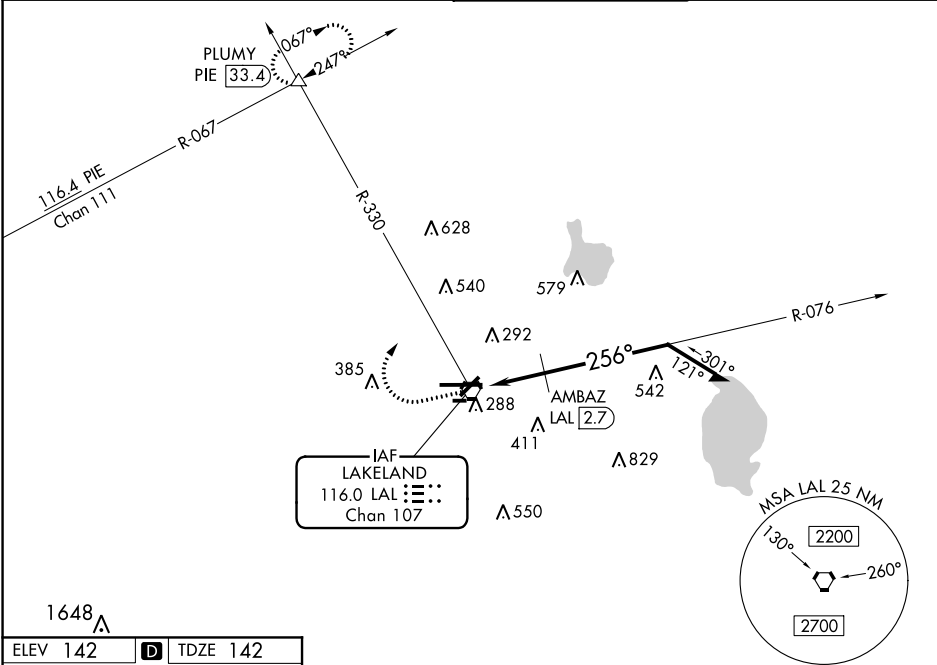
VORTAC LAL 116.0 Chan 107	APP CRS 256°	Rwy Idg 8499 TDZE 142 Apt Elev 142
---	------------------------	---

VOR RWY 27
LAKELAND LINDER INTL (LAL)

When local altimeter setting not received, use Plant City altimeter setting and increase all MDA 20 feet.
Circling NA to Rwy 8 and 26.

MISSED APPROACH: Climb to 1000 then climbing right turn to 2000 on heading 017° and on LAL VORTAC R-330 to PLUMY INT/PIE 33.4 DME and hold.

ATIS 118.025	TAMPA APP CON 120.65 290.3	LAKELAND TOWER 124.5 (CTAF) 236.775	GND CON 121.4
------------------------	--------------------------------------	--	-------------------------



ELEV 142	D	TDZE 142
-----------------	----------	-----------------

