

VORTAC LAL  
116.0  
Chan 107

APP CRS  
096°

Rwy Idg 8414  
TDZE 132  
Apt Elev 142

VOR RWY 9  
LAKELAND LINDER INTL (LAL)

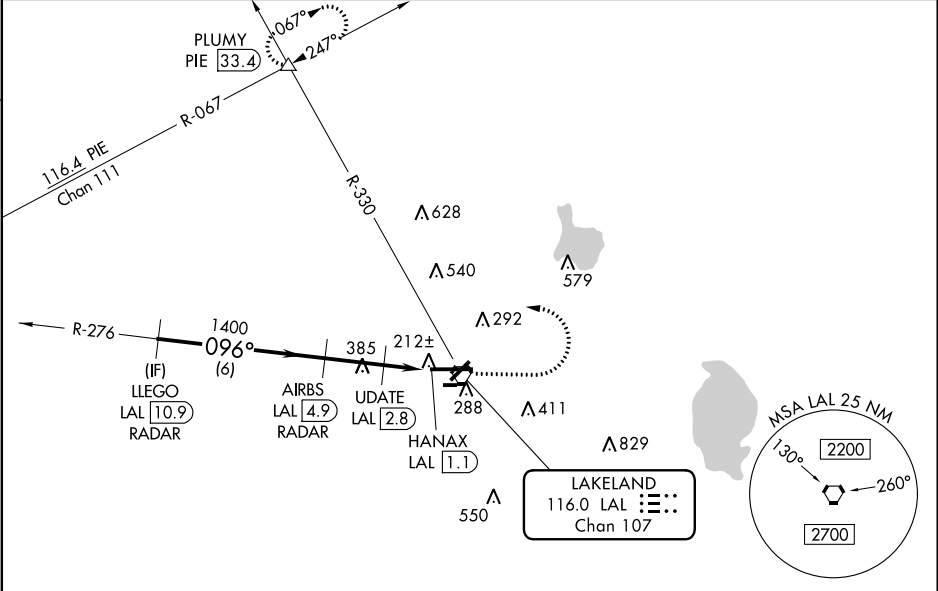
RADAR required for procedure entry. DME or RADAR required.

When local altimeter setting not received, use Plant City altimeter setting and increase all MDA 20 feet; increase Circling Cat C visibility 1/8 SM. VDP NA when using Plant City altimeter setting. For inop ALS, increase S-9 Cat C/D visibility to 1 3/8 SM; increase UDATE Fix Minimums S-9 Cat C/D visibility to 1 3/8 SM. For inop ALS when using Plant City altimeter setting, increase UDATE Fix Minimums S-9 Cat C/D visibility to 1 1/8 SM. Circling NA to Rwy 8 and 26.

MALSRLALSR

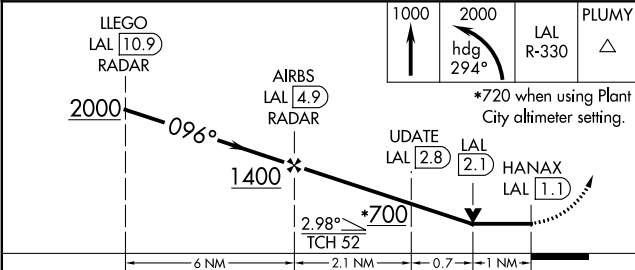
MISSED APPROACH: Climb to 1000 then climbing left turn to 2000 on heading 294° and on LAL VORTAC R-330 to PLUMY INT/PIE 33.4 DME and hold.

|                 |                               |  |                  |
|-----------------|-------------------------------|--|------------------|
| ATIS<br>118.025 | TAMPA APP CON<br>120.65 290.3 | LAKELAND TOWER<br>124.5 (CTAF) 236.775 | GND CON<br>121.4 |
|-----------------|-------------------------------|--|------------------|



ELEV 142

TDZE 132



| CATEGORY            | A           | B             | C               | D               |
|---------------------|-------------|---------------|-----------------|-----------------|
| S-9                 | 700-1/2     | 568 (600-1/2) | 700-1 1/4       | 568 (600-1 1/4) |
| CIRCLING            | 700-1       | 558 (600-1)   | 700-2           | 558 (600-2)     |
| UPDATE FIX MINIMUMS |             |               |                 |                 |
| S-9                 | 500-1/2     | 368 (400-1/2) | 500-3/4         | 368 (400-3/4)   |
| CIRCLING            | 600-1       | 660-1         | 660-1 1/2       | 700-2           |
|                     | 458 (500-1) | 518 (600-1)   | 518 (600-1 1/2) | 558 (600-2)     |

