

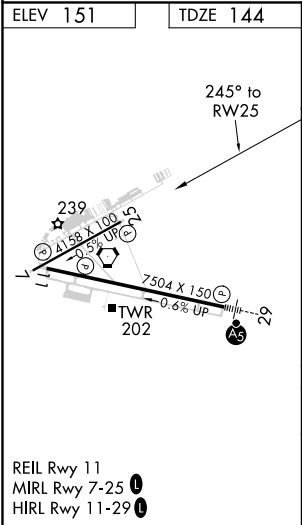
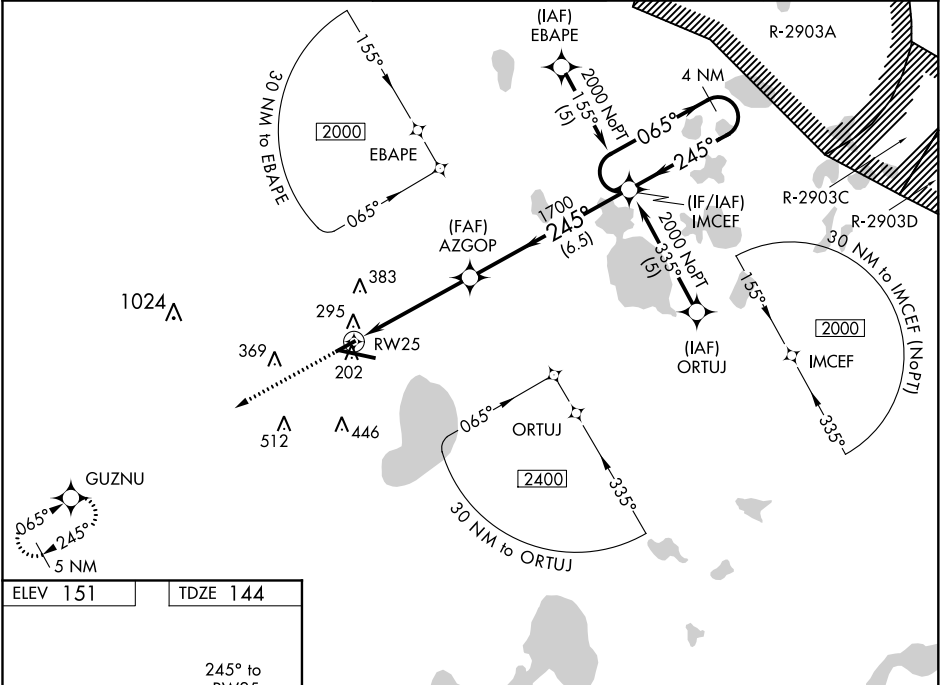
WAAS CH <b>86604</b> <b>W25A</b>	APP CRS <b>245°</b>	Rwy Idg <b>4158</b> TDZE <b>144</b> Apt Elev <b>151</b>
--	------------------------	---


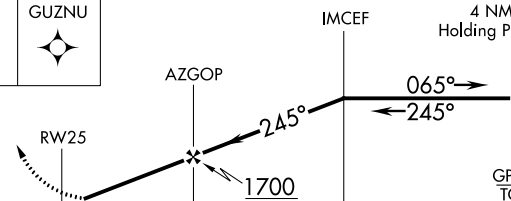
RNAV (GPS) RWY 25  
GAINESVILLE RGNL (GNV)

**⚠** Baro-VNAV NA when using Ocala Intl-Jim Taylor altimeter setting. For uncompensated Baro-VNAV systems, LNAV/VNAV NA below -15° C (5° F) or above 48° C (118° F). DME/DME RNP-0.3 NA. Visibility reduction by helicopters NA. When local altimeter setting not received, use Ocala Intl-Jim Taylor Field altimeter setting and increase all DA 81 feet and all MDA 100 feet. Increase LPV all Cats, LNAV/VNAV all Cats, LNAV Cat C and Circling Cat D visibility ¼ mile. Increase LNAV Cat D visibility ½ mile. When VGSi inoperative, straight-in/Circling Rwy 25 procedure NA at night.

MISSED APPROACH: Climb to 2100 direct GUZNU and hold.

ATIS <b>127.15</b>	JACKSONVILLE APP CON <b>118.175 338.25</b>	GAINESVILLE TOWER★ <b>119.55 (CTAF) 0 353.7</b>	GND CON <b>121.7</b>	UNICOM <b>122.95</b>
-----------------------	---	--	-------------------------	-------------------------



2100 ↑		GUZNU 							
CATEGORY		A		B		C		D	
LPV DA				501-1¼		357 (400-1¼)			
LNAV/ VNAV				694-2		550 (600-2)			
LNAV MDA		560-1 416 (500-1)				560-1¼ 416 (500-1¼)			
CIRCLING		620-1 469 (500-1)				620-1½ 469 (500-1½)		740-2 589 (600-2)	

SE-3, 31 DEC 2020 to 28 JAN 2021

SE-3, 31 DEC 2020 to 28 JAN 2021