

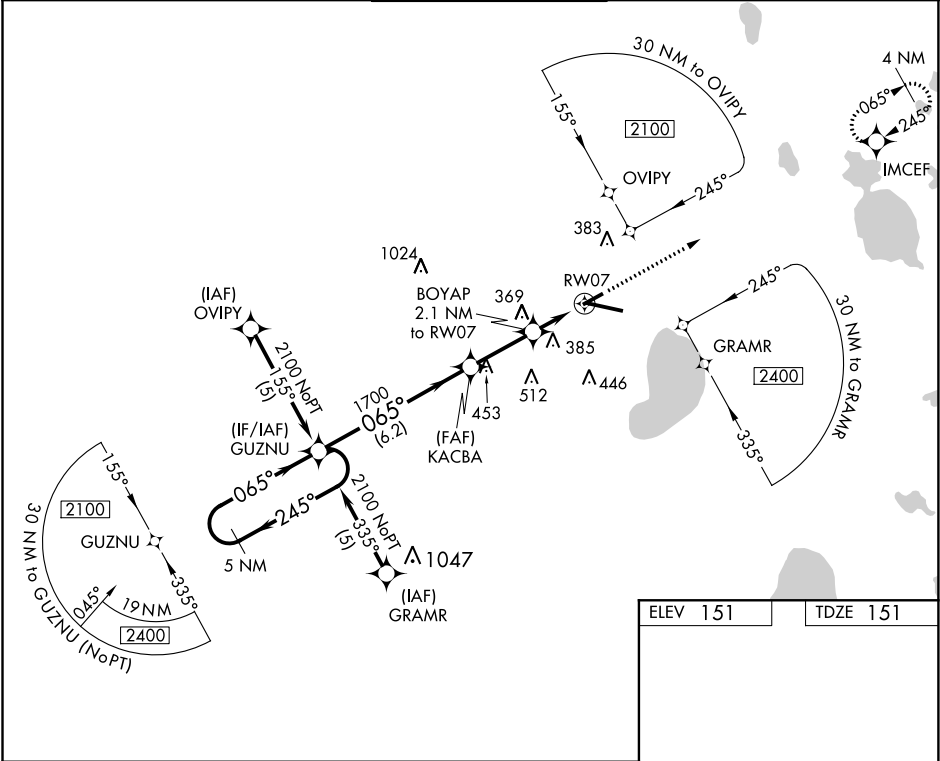
APP CRS	Rwy Idg	4158
065°	TDZE	151
	Apt Elev	151

RNAV (GPS) RWY 7  
GAINESVILLE RGNL (GNV)

**⚠** DME/DME RNP-0.3 NA. Visibility reduction by helicopters NA. VDP NA when using Ocala Intl-Jim Taylor Fld altimeter setting. When local altimeter setting not received, use Ocala Intl-Jim Taylor Field altimeter setting and increase all MDA 100 feet. Increase LNAV Cat C and Cat D, and Circling Cat D visibility ¼ mile. When VGSI inoperative, Circling Rwy 25 NA at night.

MISSED APPROACH: Climb to 2000 direct IMCEF and hold.

ATIS 127.15	JACKSONVILLE APP CON 118.175 338.25	GAINESVILLE TOWER★ 119.55 (CTAF) 0 353.7	GND CON 121.7	UNICOM 122.95
----------------	--	---	------------------	------------------



5 NM Holding Pattern

GUZNU

KACBA

BOYAP 2.1 NM to RW07

1.3 NM to RW07

RW07

2000

IMCEF

2100

1700

860

6.2 NM

2.6 NM

0.8

1.3 NM

CATEGORY	A	B	C	D
LNAV MDA	620-1 469 (500-1)	620-1¼ 469 (500-1¼)	620-1½ 469 (500-1½)	620-1½ 469 (500-1½)
CIRCLING	620-1 469 (500-1)	620-1½ 469 (500-1½)	740-2 589 (600-2)	

ELEV 151

TDZE 151

REIL Rwy 11

MIRL Rwy 7-25 0

HIRL Rwy 11-29 0

TWR 202

065° to RW07

239

1158 X 100

7504 X 150

0.6% Up

0.6% Up

29

SE-3, 31 DEC 2020 to 28 JAN 2021

SE-3, 31 DEC 2020 to 28 JAN 2021