

LOC/DME I-VQV 109.5 Chan 32	APP CRS 005°	Rwy Idg TDZE 72 Apt Elev 80	12503
---	------------------------	---	--------------

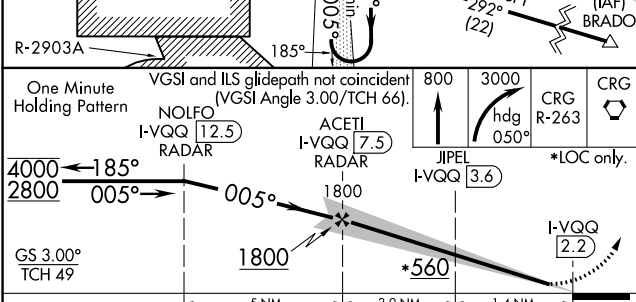
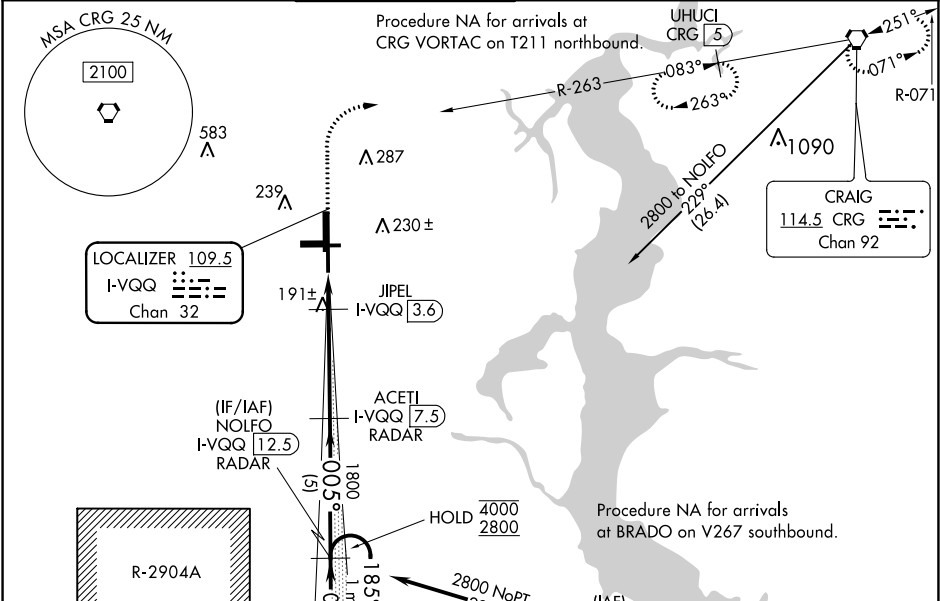
ILS or LOC RWY 36R
CECIL (VQV)

From BRADO: RNAV 1-GPS required.
DME or RADAR required for LOC only.

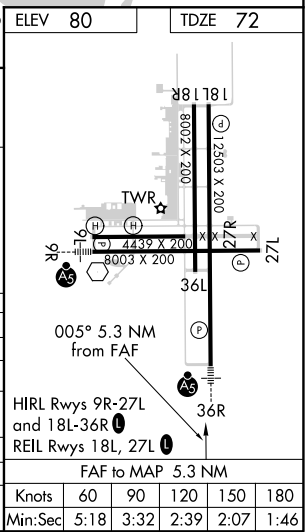
MALSRR
AS

MISSED APPROACH: Climb to 800 then climbing right turn to 3000 on heading 050° and on CRG VORTAC R-263 to CRG VORTAC and hold. (TACAN aircraft climb to 800 then climbing right turn to 3000 on heading 050° and on CRG VORTAC R-263 to UHUCI/CRG 5 DME and hold west, right turn, 083° inbound).

ATIS 125.275	JACKSONVILLE APP CON 127.775 377.075	CECIL TOWER ★ 126.1 (CTAF) 387.025	GND CON 121.625 384.4	CLNC DEL 123.975	GCO 135.075	UNICOM 122.95
------------------------	--	---	---------------------------------	----------------------------	-----------------------	-------------------------



CATEGORY	A	B	C	D	E
S-ILS 36R	272-1/2		200 (200-1/2)		
S-LOC 36R	560-1/2	488 (500-1/2)	560-1	488 (500-1)	
CIRCLING	560-1	480 (500-1)	600-1 1/2 520 (600-1/2)	640-2 560 (600-2)	900-3 820 (900-3)
JIPEL FIX MINIMUMS (DME REQUIRED)					
S-LOC 36R	460-1/2	388 (400-1/2)	460-3/8	388 (400-3/8)	
CIRCLING	540-1 460 (500-1)	560-1 480 (500-1)	600-1 1/2 520 (600-1/2)	640-2 560 (600-2)	900-3 820 (900-3)



SE-3, 31 DEC 2020 to 28 JAN 2021

SE-3, 31 DEC 2020 to 28 JAN 2021