

WAAS CH 56616 W18A	APP CRS 185°	Rwy Idg 12503 TDZE 79 Apt Elev 80
--	------------------------	--

RNAV (GPS) RWY 18L

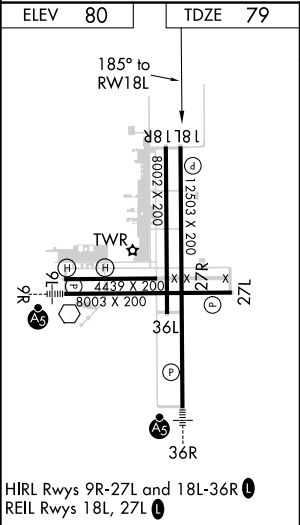
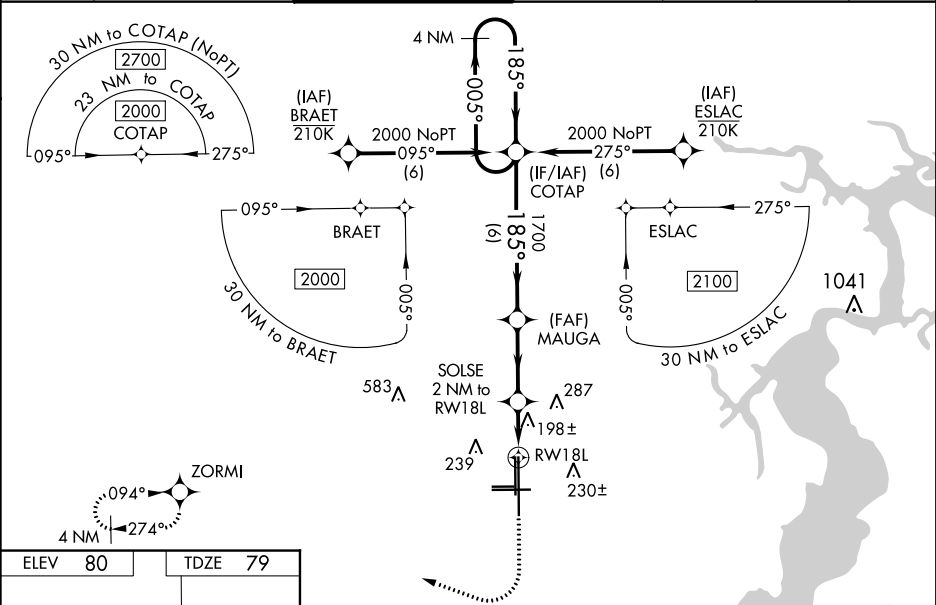
CECIL (VQQ)




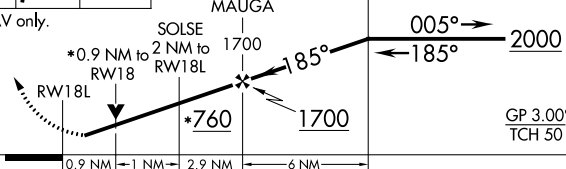

⚠ Baro-VNAV NA when using Jacksonville Intl altimeter setting. For uncompensated Baro-VNAV systems, LNAV/VNAV NA below -1.5°C (5°F) or above 54°C (130°F). DME/DME RNP-0.3 NA.

⚠ When local altimeter setting not received, use Jacksonville Intl altimeter setting and increase all DA 52 feet and all MDA 60 feet. For inop MALS, increase LNAV Cats C/D visibility to 1½ mile. For inop MALS, when using Jacksonville Intl altimeter setting, increase LNAV/VNAV all Cats visibility to 1½ mile and LNAV Cats C/D visibility to 1½ mile. Inop table does not apply to LPV and LNAV/VNAV all Cats and LNAV Cat A/B visibilities. When using Jacksonville Intl altimeter setting, inop table does not apply to LPV all Cats and LNAV Cat A/B visibilities. VDP NA when using Jacksonville Intl altimeter setting.

MISSED APPROACH: Climb to 1000 then dimbing right turn to 2000 direct ZORMI and hold.

ATIS 125.275	JACKSONVILLE APP CON 127.775 377.075	CECIL TOWER ★ 126.1 (CTAF) 387.025	GND CON 121.625 384.4	CLNC DEL 123.975	GCO 135.075	UNICOM 122.95
------------------------	--	--	---------------------------------	----------------------------	-----------------------	-------------------------



1000	2000	ZORMI	VGSI and RNAV glidepath not coincident (VGSI Angle 3.00/TCH 66).	
			4 NM Holding Pattern	
*LNAV only.				
				
CATEGORY	A	B	C	D
LPV DA	329-1		250 (300-1)	
LNAV/ VNAV DA	368-1		289 (300-1)	
LNAV MDA	460-1		381 (400-1)	
 CIRCLING	540-1 460 (500-1)	560-1 480 (500-1)	600-1½ 520 (600-1½)	640-2 560 (600-2)