

WAAS CH 50516 W09A	APP CRS 095°	Rwy Idg 8003 TDZE 77 Apt Elev 80
--	------------------------	---


RNAV (GPS) RWY 9R

CECIL (VQQ)

▼ Baro-VNAV NA when using Jacksonville Intl altimeter setting. For uncompensated Baro-VNAV systems, LNAV/VNAV NA below -15°C (5°F) or above 54°C (130°F). DME/DME RNP-0.3 NA.

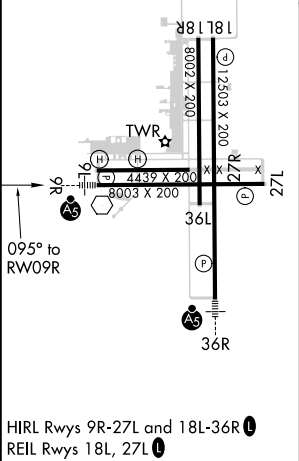
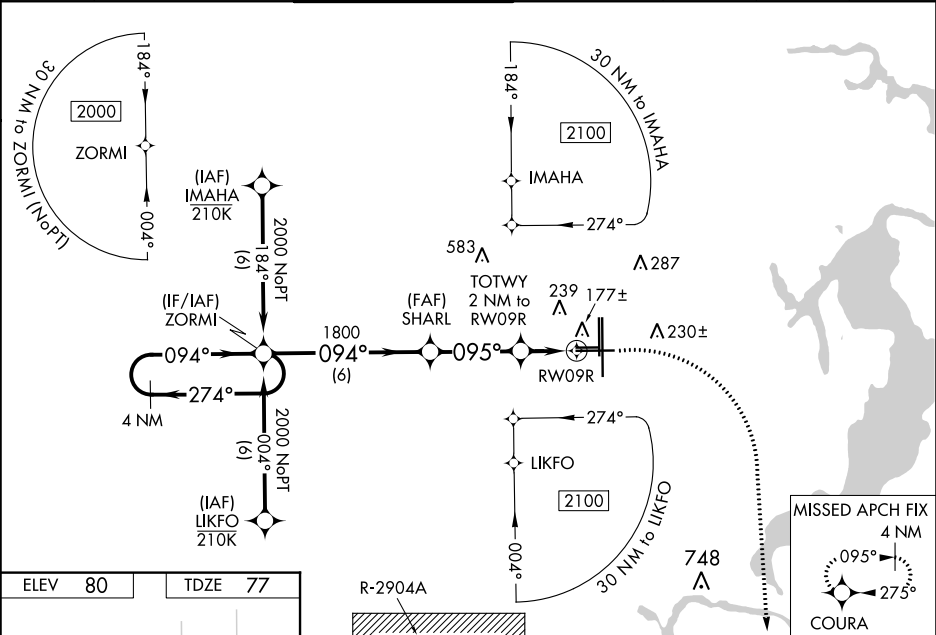
▲ Helicopter visibility reduction below ¾ SM NA. When local altimeter setting not received, use Jacksonville Intl altimeter setting and increase all DA 52 feet and all MDA 60 feet. For inop MALSR, increase LPV and LNAV/VNAV all Cats visibility to ¾ mile, and LNAV all Cats visibility to 1 mile. For inop MALSR, when using Jacksonville Intl altimeter setting, increase LPV all Cats visibility to 1 mile, LNAV/VNAV all Cats visibility to 1 mile, and LNAV Cats C/D visibility to 1 ½ mile.

MALSR



MISSED APPROACH:
Climb to 700 then climbing right turn to 2000 direct COURA and hold.

ATIS 125.275	JACKSONVILLE APP CON 127.775 377.075	CECIL TOWER★ 126.1 (CTAF) 387.025	GND CON 121.625 384.4	CLNC DEL 123.975	GCO 135.075	UNICOM 122.95
------------------------	--	---	---------------------------------	----------------------------	-----------------------	-------------------------



ELEV 80		TDZE 77	
R-2904A		VGSI and RNAV glidepath not coincident (VGSI Angle 3.00/TCH 68).	
4 NM Holding Pattern		ZORMI	
2000		SHARL	
GP 3.00° TCH 53		TOTWY 2 NM to RW09R	
1800		*760	
6 NM		3.3 NM	
1.1		0.9	
CATEGORY	A	B	C
LPV DA	351-¾	274 (300-¾)	
LNAV/VNAV DA	338-¾	261 (300-¾)	
LNAV MDA	440-¾	363 (400-¾)	
CIRCLING	540-1 460 (500-1)	560-1 480 (500-1)	600-1½ 520 (600-1½)
			640-2 560 (600-2)