


MILTON, FLORIDA

ILS Z or RNAV (GPS) RWY 32

LOC/DME I-NDZ 110.55 Chan 42(Y)	APCH CRS 319°	Rwy ldg TDZE 172 Arprt Elev 177
--	-------------------------	---

AL-1909 [USN]

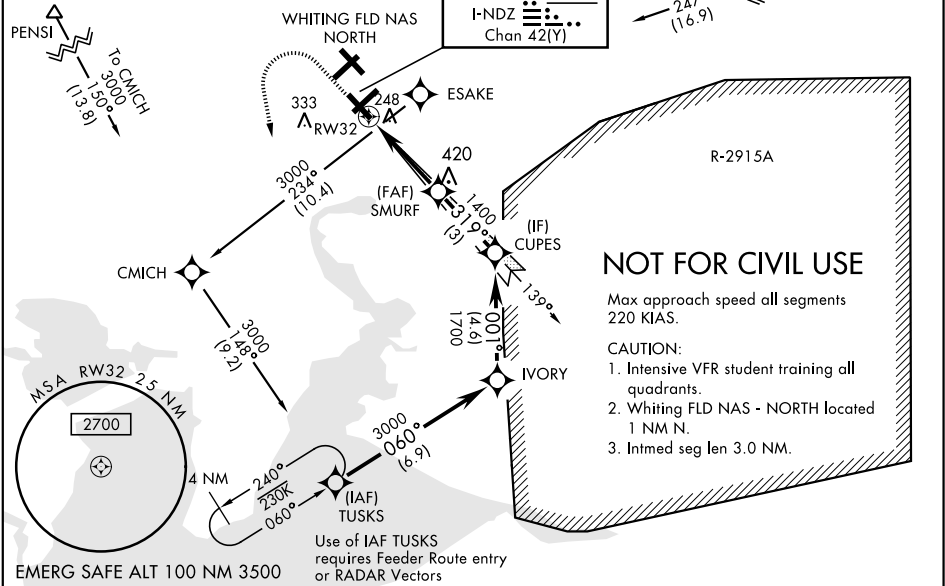
WHITING FLD NAS - SOUTH (KNDZ)




GPS Required for ILS procedure. * When ALS inop, increase vis to ¾ mile. ** When ALS inop, increase CAT ABC vis to ¾ mile; CAT D vis to 7/8. *** When ALS inop, increase vis to 1 mile.	MALSR 	MISSED APPROACH: Climb to 800. Then climbing left turn to 3000, direct to TUSKS and hold. Contact Pensacola Approach Control.
---	--	--

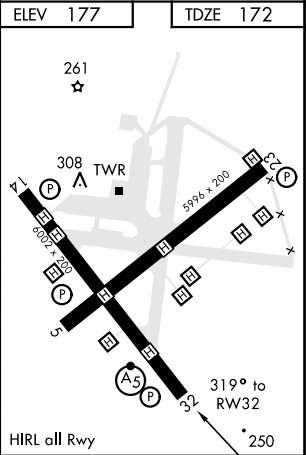
ATIS ★ 273.575	PENSACOLA APP CON 124.85 385.4	SOUTH WHITING TOWER ★ 121.4 348.675	GND CON 317.65	CLNC DEL 355.6	ASR/ PAR
--------------------------	--	---	--------------------------	--------------------------	-------------

**** Circling not authorized in sector NE of Rwy 14-32 and NW of Rwy 5-23.

For uncompensated Baro-VNAV systems,
Procedure NA below -15°C (5°F) or above 54°C (129°F).
RNP APCH
RNAV 1-GPS



				
† LNAV only				
† 1.0 NM to RW32				
3.7 NM				
CATEGORY	A	B	C	D
S-ILS 32 *	422-½		250	(300-½)
LNAV/ ** VNAV DA	422-½ 250 (300-½)	424-½ 252 (300-½)	432-½ 260 (300-½)	433-½ 271 (300-½)
LNAV MDA ***	540-½ 368 (400-½)		540-¾ 368 (400-¾)	
**** CIRCLING	620-1 443 (500-1)	640-1 463 (500-1)	680-1½ 503 (600-1½)	740-2 563 (600-2)



MILTON, FLORIDA

Amtd 6 10SEP20

30°42'N-87°01'W

WHITING FLD NAS - SOUTH (KNDZ)

ILS Z or RNAV (GPS) RWY 32

SE-3, 31 DEC 2020 to 28 JAN 2021

SE-3, 31 DEC 2020 to 28 JAN 2021