

LOC I-STX	APP CRS	Rwy ldg	9003
109.5	097°	TDZE	74
		Apt Elev	74

ILS or LOC RWY 10

HENRY E ROHLSEN (STX)(TISX)

⚠

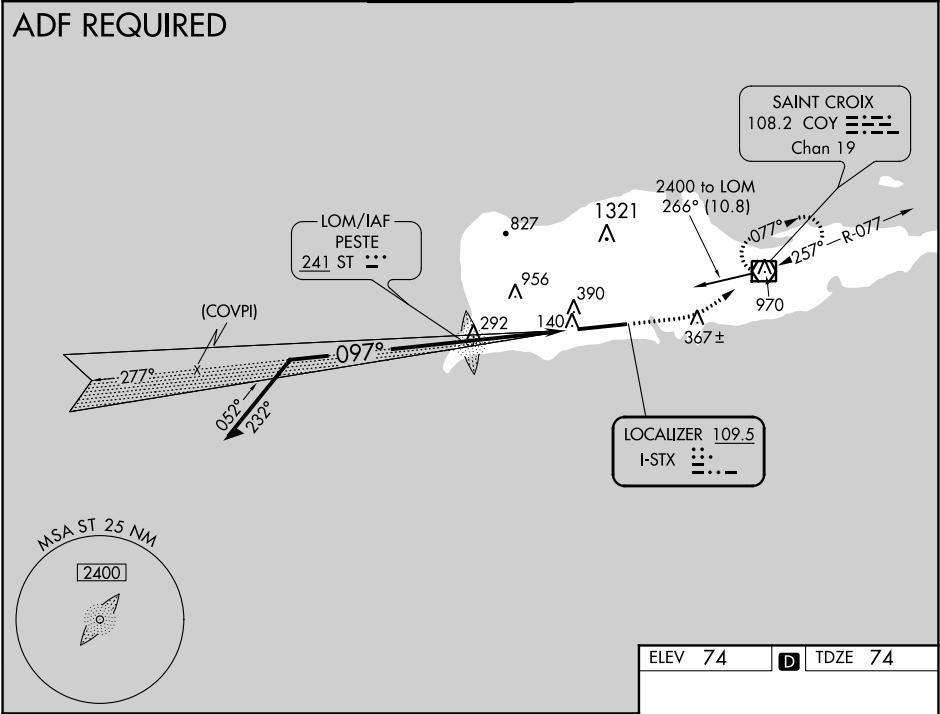
⚠

Circling NA N of Rwy 10-28. If local altimeter setting not received, procedure NA. For inoperative MALSR, increase S-ILS 10 all Cats visibility to 1.

MALSR

MISSED APPROACH: Climb to 700 then climbing left turn to 2400 direct COY VOR/DME and hold, continue climb-in-hold to 2400.

ATIS	SAN JUAN CENTER	ST. CROIX TOWER ★	GND CON	UNICOM
135.65	128.65 279.6	118.6 (CTAF) 239.3	121.7	123.0



VGSI and ILS glidepath not coincident (VGSI Angle 3.00/TCH 73).

Remain within 10 NM

ST LOM 2400

2000

097°

GS 3.00° TCH 59

1500

1404

4 NM

ELEV 74

TDZE 74

700

2400

COY

10004 X 150

253

0.6% DOWN

0.4% UP

TWR 141±

097° 4 NM from FAF

CATEGORY	A	B	C	D
S-ILS 10	375-½ 301 (400-½)			
S-LOC 10	480-½	406 (500-½)	480-¾	406 (500-¾)
CIRCLING	480-1 406 (500-1)	540-1 466 (500-1)	540-1½ 466 (500-1½)	640-2 566 (600-2)

REIL Rwy 28

HIRL Rwy 10-28

FAF to MAP 4 NM

Knots	60	90	120	150	180
Min:Sec	4:00	2:40	2:00	1:36	1:20