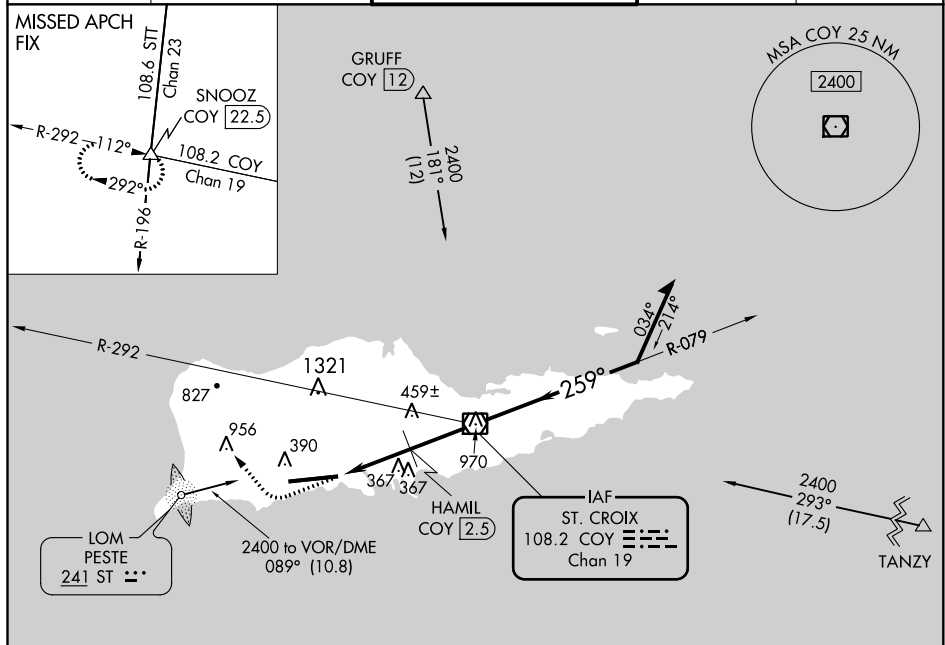


VOR RWY 28
HENRY E ROHLSEN (STX)(TISX)

- MISSED APPROACH:** Climb to 2000 then climbing right turn to 2400 via heading 330° and COY R-292 to SNOOZ Int/COY 22.5 DME and hold.

ATIS 135.65	SAN JUAN CENTER 128.65 279.6	ST. CROIX TOWER ★ 118.6 (CTAF) 0 239.3	GND CON 121.7	UNICOM 123.0
----------------	---------------------------------	---	------------------	-----------------



ELEV 65 **D** TDZE 43

REIL Rwy 28
HIRL Rwy 28 **D**

FAF to MAP 5 NM

	Knots	60	90	120	150	180
Min:Sec	5:00	3:20	2:30	2:00	1:40	

Diagram details: 259° 5.3 NM from FAF, 10004 X 150, 0.4% UP, 0.6% DOWN, TWR 141±, 253', 28.

SE-3, 31 DEC 2020 to 28 JAN 2021

SE-3. 31 DEC 2020 to 28 JAN 2021