

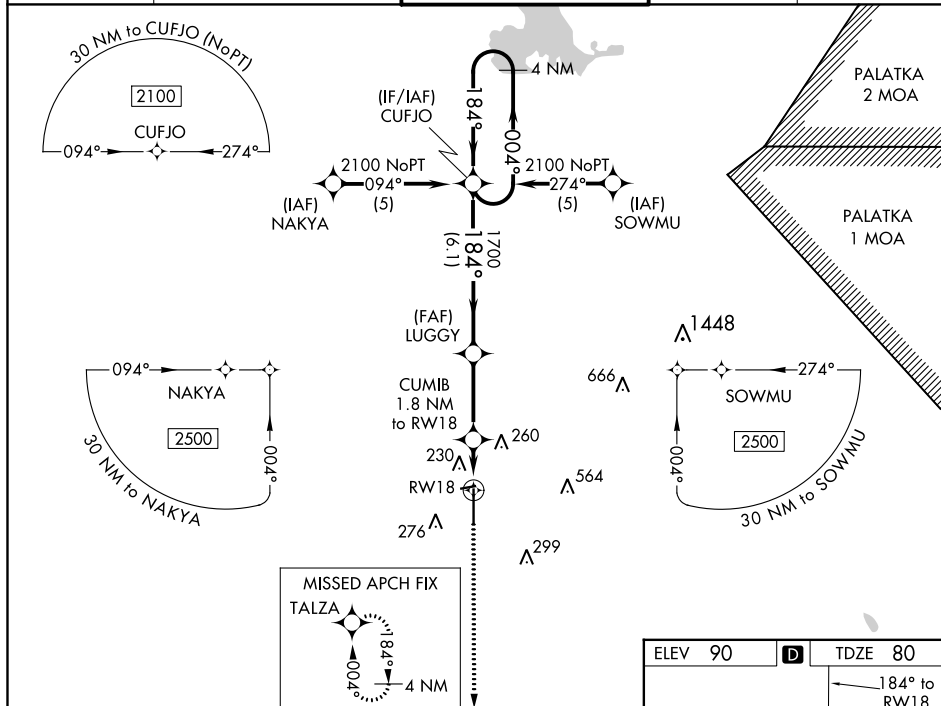
WAAS CH 90319 W18A	APP CRS 184°	Rwy Idg 6557 TDZE 80 Apt Elev 90
--	------------------------	---

RNAV (GPS) RWY 18
OCALA INTL-JIM TAYLOR FIELD (OCF)

T For uncompensated Baro-VNAV systems, LNAV/VNAV NA below -15°C (5°F) or above 48°C (118°F). DME/DME RNP-0.3 NA. When local altimeter setting not received, use Gainesville altimeter setting and increase LPV DA to 361, increase LNAV/VNAV DA to 595 and all MDA 100 feet. Increase LPV and LNAV/VNAV all Cats and LNAV Cat C/D visibility ¼ mile. Baro-VNAV and VDP NA when using Gainesville altimeter setting.

MISSED APPROACH:
Climb to 2000 direct
TALZA and hold.

ATIS 128.125	JACKSONVILLE APP CON 118.6 251.15	OCALA TOWER★ 119.25 (CTAF) 0	GND CON 121.4	UNICOM 123.0
------------------------	---	---	-------------------------	------------------------



4 NM Holding Pattern

VGS and RNAV glidepath not coincident (VGS Angle 3.00/TCH 45).

CUMIB 1.8 NM to RW18

RW18

2000

TALZA

*LNAV only.

2100

←004°

184°→

184°

1700

1700

*700

GP 3.00° TCH 52

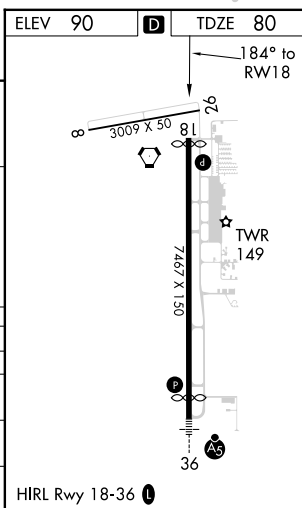
6.1 NM

3.1 NM

0.7

1.1

CATEGORY	A	B	C	D
LPV DA		280-3 ³ / ₄	200 (200-3 ³ / ₄)	
LNAV/VNAV DA		514-1 ¹ / ₂	434 (500-1 ¹ / ₂)	
LNAV MDA		480-1	400 (400-1)	480-1 ¹ / ₄ 400 (400-1 ¹ / ₄)
CIRCLING	580-1	490 (500-1)	580-1 ¹ / ₂ 490 (500-1 ¹ / ₂)	640-2 550 (600-2)



SE-3, 31 DEC 2020 to 28 JAN 2021