

RNAV (GPS) RWY 13

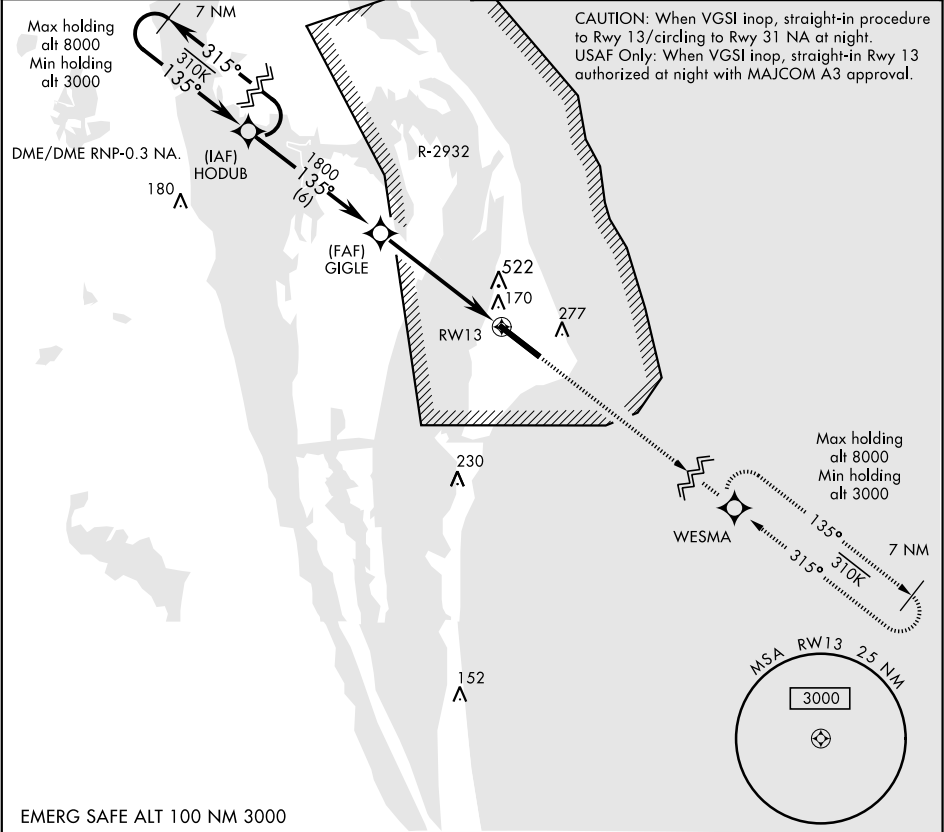
APCH CRS	Rwy ldg	10,000
135°	TDZE	10
	Arpt Elev	10

AL-5157 [USAF] CAPE CANAVERAL AFS SKID STRIP (KXMR)

✈ *Circling not authorized NE of Rwy 13-31.

MISSED APPROACH: Climb to 3000 direct WESMA and hold.

ORLANDO APP CON 134.95 281.425	CAPE TOWER ★ 118.625 143.15 239.05
-----------------------------------	---------------------------------------



EMERG SAFE ALT 100 NM 3000

CATEGORY	A	B	C	D	E
LNAV MDA	540-1 530 (600-1)	540-1½ 530 (600-1½)	540-1½ 530 (600-1½)	620-2 610 (700-2)	640-2¼ 630 (700-2¼)
CIRCLING *	580-1 570 (600-1)	580-1½ 570 (600-1½)	620-2 610 (700-2)	640-2¼ 630 (700-2¼)	640-2¼ 630 (700-2¼)

WESMA 3000

TWR 10,000 x 200

135° 5.5 NM from GIGLE

235 ft

ELEV	10	TDZE	10
HIRL Rwy 13-31			

RNAV (GPS) RWY 13

SE-3, 31 DEC 2020 to 28 JAN 2021

SE-3, 31 DEC 2020 to 28 JAN 2021