

RNAV (GPS) RWY 31

APCH CRS	Rwy ldg	10,000
315°	TDZE	9
	Arpt Elev	10

AL-51.57 [USAF]

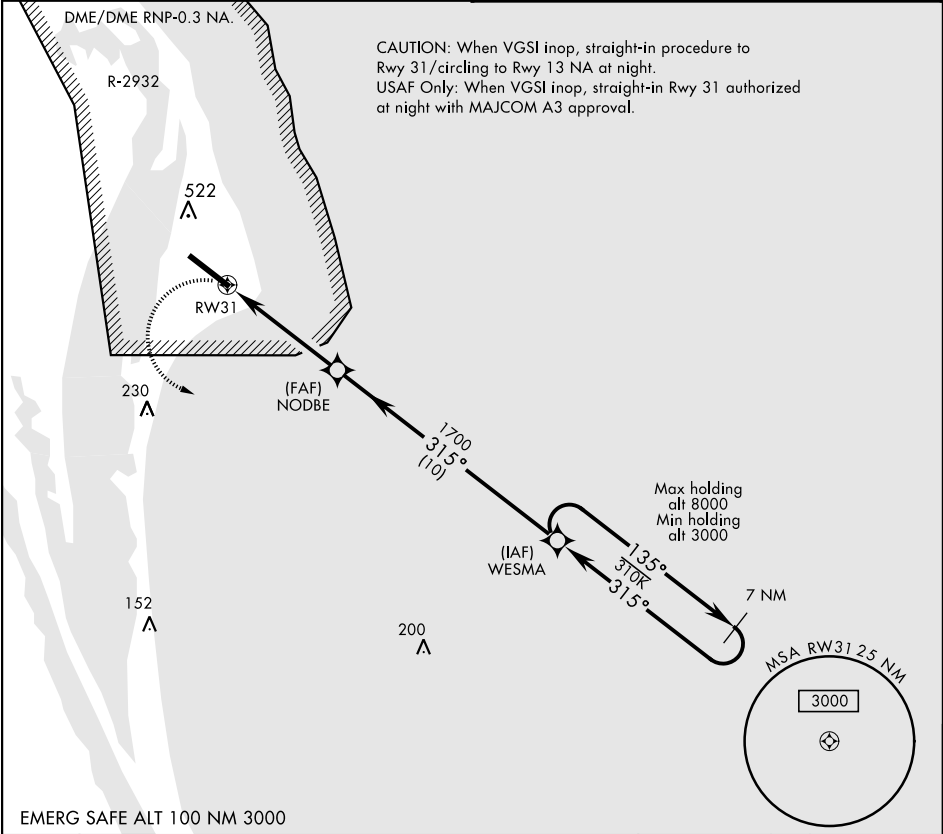
CAPE CANAVERAL AFS SKID STRIP (KXMR)

⚠ * When ALS inop, increase CAT CDE vis to 1 3/8 miles.
** Circling not authorized NE of Rwy 13-31.

SALS
(A₂)

MISSED APPROACH: Turn left, climb to 3000
direct WESMA and hold.

ORLANDO APP CON 134.95 281.425	CAPE TOWER ★ 118.625 143.15 239.05
-----------------------------------	---------------------------------------



EMERG SAFE ALT 100 NM 3000

3000 WESMA

WESMA

NODBE

RW31

1700

315°

135°

315°

3000

3.04° TCH 79

5 NM

CATEGORY	A	B	C	D	E
RNAV MDA *	500-1 491 (500-1)	500-1 491 (500-1)	500-1 491 (500-1)	500-1 491 (500-1)	500-1 491 (500-1)
CIRCLING **	580-1 570 (600-1)	580-1 570 (600-1)	580-1 570 (600-1)	620-2 610 (700-2)	640-2 630 (700-2)

ELEV 10 TDZE 9

TWR

10,000 ± 200

315° 5 NM from NODBE

235 A

120 A

HIRL Rwy 13-31

RNAV (GPS) RWY 31

SE-3, 31 DEC 2020 to 28 JAN 2021

SE-3, 31 DEC 2020 to 28 JAN 2021