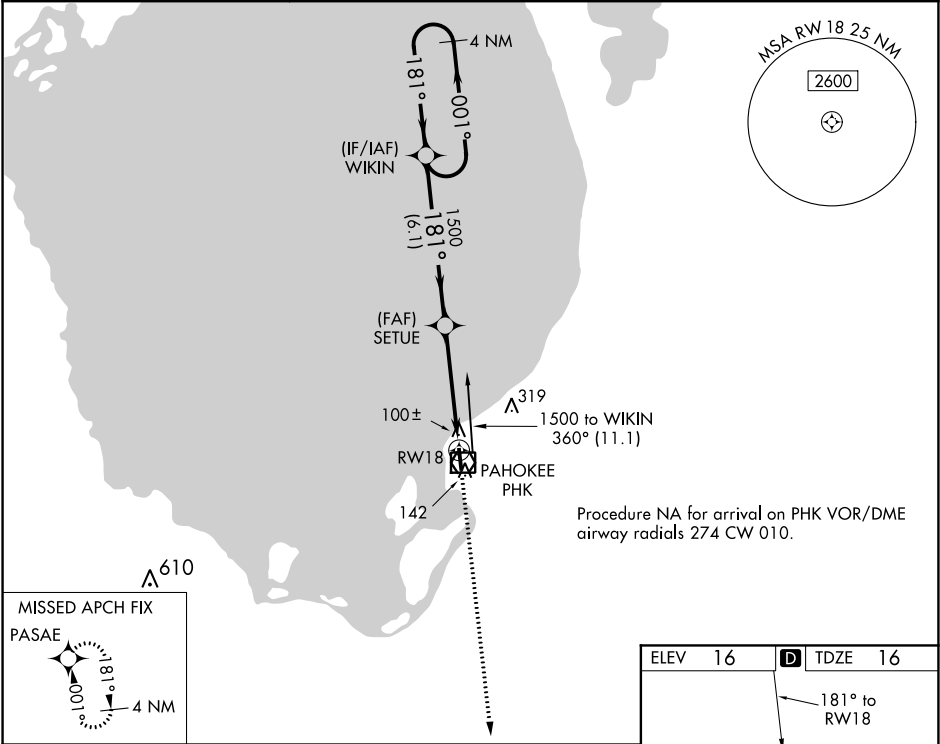


WAAS CH 53408 W18A	APP CRS 181°	Rwy Idg TDZE Apt Elev	4016 16 16
--	------------------------	-----------------------------	---------------------------------------

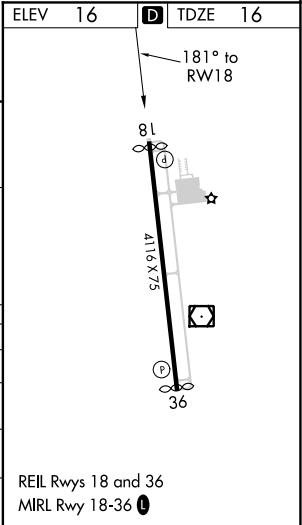
RNAV (GPS) RWY 18
PALM BEACH COUNTY GLADES (PHK)

NA Baro-VNAV NA. Rwy 18 helicopter visibility reduction below $\frac{3}{4}$ SM NA. DME/DME RNP-0.3 NA. Use Palm Beach Intl altimeter setting, when not received procedure NA.	MISSED APPROACH: Climb to 2000 direct PASAE and hold.
--	---

PBI ASOS 123.75	PALM BEACH APP CON 128.3 317.4	UNICOM 122.8 (CTAF) 0
---------------------------	--	---------------------------------



VGSI and RNAV glidepath not coincident (VGSI Angle 3.00/TCH 44).				2000	PASAE
4 NM Holding Pattern					
1500 ← 001° 181° → 1500					
GP 3.00° TCH 55					
WIKIN SETUE 1500					
6.1 NM 4.5 NM					
CATEGORY	A	B	C	D	
LPV DA	358-1 $\frac{1}{8}$		342 (400-1 $\frac{1}{8}$)		
LNAV/VNAV DA	342-1		326 (400-1)		
LNAV MDA	440-1 424 (500-1)		440-1 $\frac{1}{4}$ 424 (500-1 $\frac{1}{4}$)		
CIRCLING	580-1 564 (600-1)		760-2 $\frac{1}{4}$ 744 (800-2 $\frac{1}{4}$)		



SE-3, 31 DEC 2020 to 28 JAN 2021

SE-3, 31 DEC 2020 to 28 JAN 2021