

WAAS
CH **40208**
W35A

APP CRS
355°

Rwy Idg **8006**
TDZE **163**
Apt Elev **214**

RNAV (GPS) RWY 35
BOB SIKES (CEW)

RNP APCH.

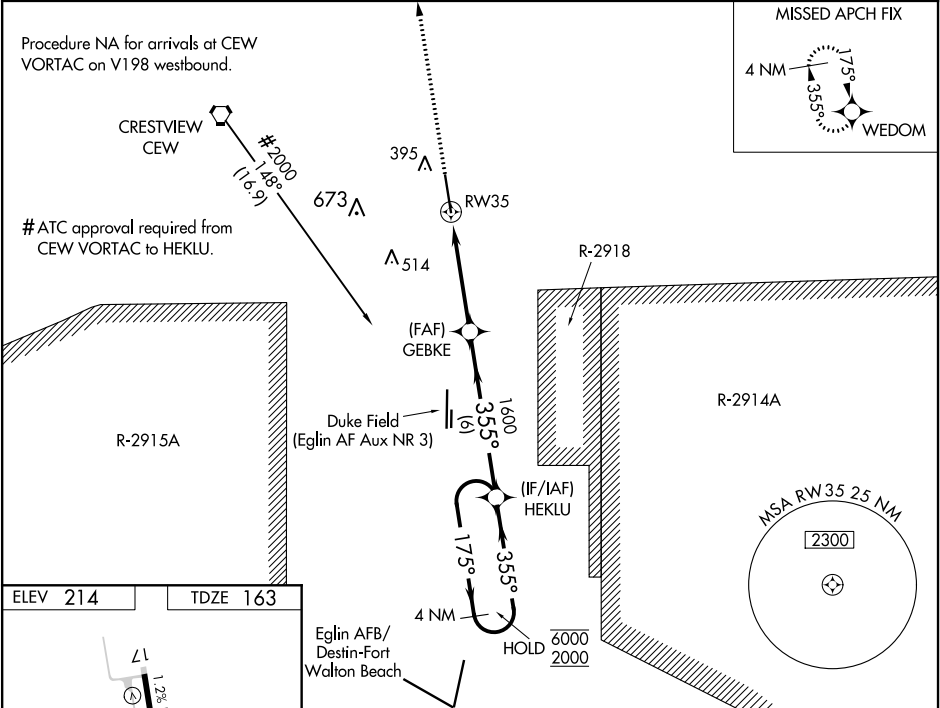
▼

▲

Baro-VNAV and VDP NA when using Eglin AFB altimeter setting. Rwy 35 helicopter visibility reduction below ¾ SM NA. For uncompensated Baro-VNAV systems, LNAV/VNAV NA below -5°C or above 54°C. When local altimeter setting not received, use Eglin AFB altimeter setting and increase LPV DA to 509, LNAV/VNAV DA to 550, and all MDA 60 feet, increase LNAV Cat C/D visibility ½ SM.

MISSED APPROACH: Climb to 2000 direct WEDOM and hold.

| | | |
|------------------------|---------------------------------------|----------------------------------|
| ASOS 119.275 | EGLIN APP CON 124.05 284.65 | UNICOM 122.95 (CTAF) 0 |
|------------------------|---------------------------------------|----------------------------------|



| | | | | | | |
|--------------|----------|---|---|---------------------|---|----------------------|
| ELEV 214 | TDZE 163 | 2000 WEDOM VGSI and RNAV glidepath not coincident (VGSI Angle 3.00/TCH 62). | | | | 4 NM Holding Pattern |
| | | | | | | GP 3.00° TCH 52 |
| | | CATEGORY | A | B | C | D |
| LPV DA | | 450-1 287 (300-1) | | | | |
| LNAV/VNAV DA | | 491-1¼ 328 (300-1¼) | | | | |
| LNAV MDA | | 640-1 477 (500-1) | | 640-1⅜ 477 (500-1⅜) | | |