
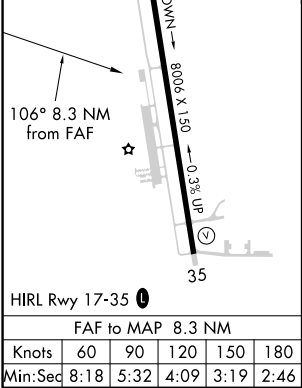
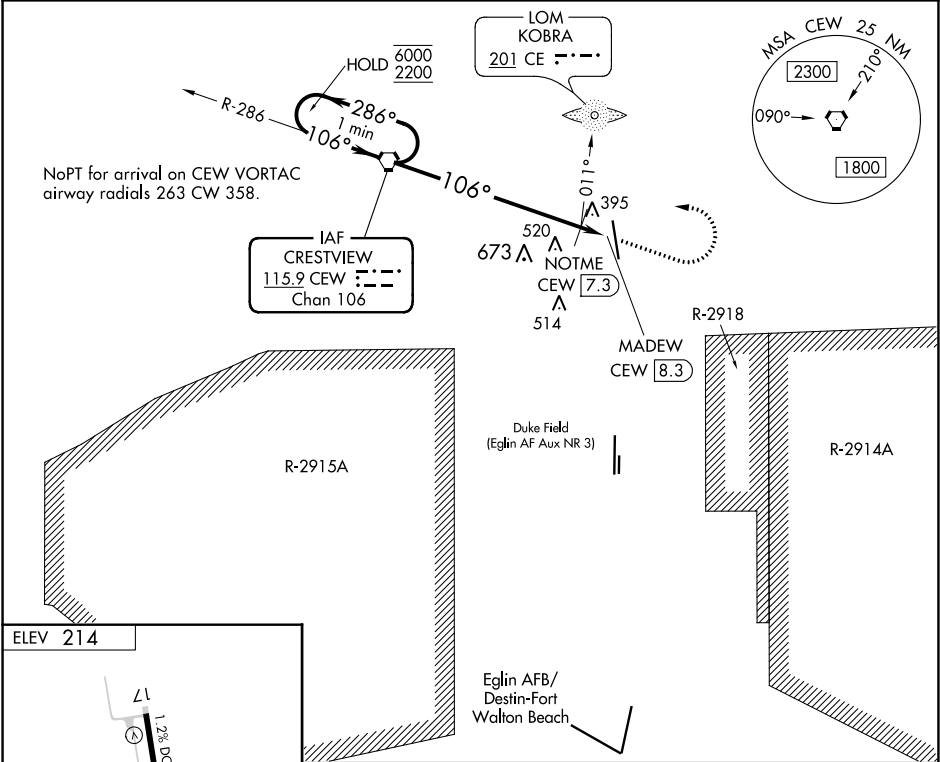





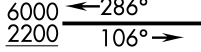

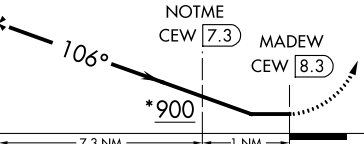


VORTAC CEW 115.9 Chan 106	APP CRS 106°	Rwy Idg TDZE Apt Elev N/A N/A 214
---	------------------------	---

VOR-A

BOB SIKES(CEW)

<div><div><div><div></div><div></div></div><div><div></div><div></div></div></div><div></div></div> <div>Circling NA for Cat D west of Rwy 17-35. When local altimeter setting not received, use Eglin AFB altimeter setting and increase all MDA 60 feet and increase Circling Cat C/D visibility ¼ SM.</div>	MISSED APPROACH: Climb to 1200 then climbing left turn to 2200 direct CEW VORTAC and hold.	
ASOS 119.275	EGLIN APP CON 124.05 284.65	UNICOM 122.95 (CTAF) 



One Minute Holding Pattern		CEW VORTAC		1200 	2200 	CEW 
						
* 960 when using Eglin AFB altimeter setting.						
		7.3 NM		1 NM		
CATEGORY	A		B	C	D	
 CIRCLING	900-1 686 (700-1)			900-2 686 (700-2)	900-2¼ 686 (700-2¼)	
NOTME FIX MINIMUMS (ADF OR DME REQUIRED)						
 CIRCLING	700-1 486 (500-1)			820-1¾ 606 (700-1¾)	840-2 626 (700-2)	