

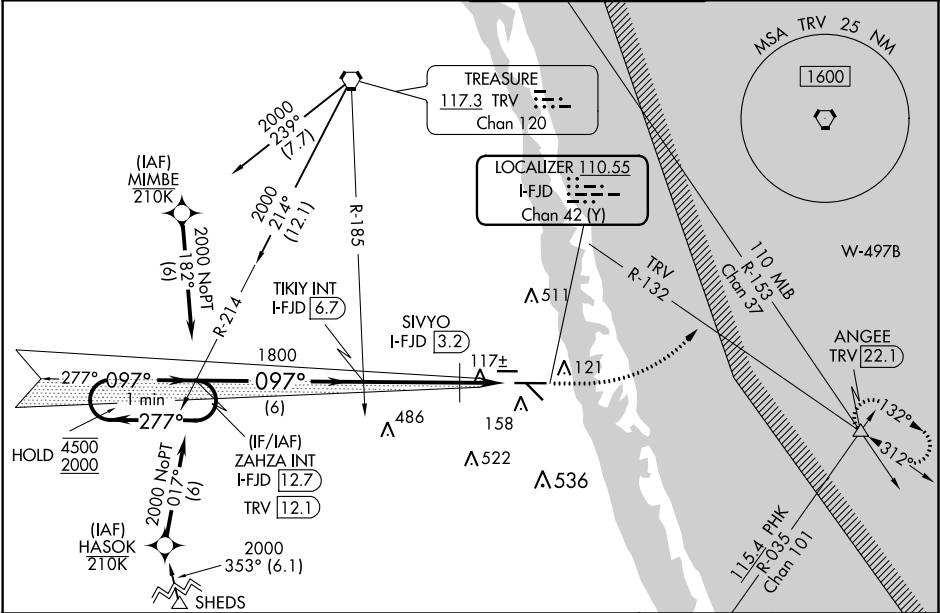
LOC/DME	I-FJD	APP CRS	Rwy Idg	6492
110.55		097°	TDZE	23
Chan 42 (Y)			Apt Elev	23

ILS or LOC RWY 10R
TREASURE COAST INTL (FPR)

RNAV 1-GPS or DME required for procedure entry.

<p>⚠ Autopilot coupled approach NA below 720 MSL.</p>	<p>MISSED APPROACH: Climb to 1000 then climbing left turn to 2000 on heading 080° and TRV VORTAC R-132 to ANGEV INT/TRV 22.1 DME and hold.</p>
--	--

ATIS 134.825	PALM BEACH APP CON 132.8	FORT PIERCE TOWER ★ 128.2 (CTAF) 0	GND CON 119.55
-----------------	-----------------------------	---------------------------------------	-------------------



VGSI and ILS glidepath not coincident (VGSI Angle 3.00/TCH 52).				1000	2000	ANGEV	ELEV 23	TDZE 23	
				↑	hdg 080°	TRV R-132	△		
One Minute Holding Pattern				* LOC only.					
ZAHZA INT I-FJD 12.7				TIKIY INT I-FJD 6.7	SIYVO I-FJD 3.2				
4500 ← 277°				1800	* I-FJD 2.2	I-FJD 1.2			
2000 → 097°									
GS 3.00° TCH 49				1800	* 560				
6 NM				3.4 NM	1 NM	1 NM			
CATEGORY	A	B	C	D					
S-ILS 10R	273-¾			250 (300-¾)					
S-LOC 10R	560-1	537 (600-1)	560-1½	537 (600-1½)					
CIRCLING	560-1	537 (600-1)	880-2½ 857 (900-2½)	880-2¾ 857 (900-2¾)					
SIYVO FIX MINIMUMS (DME REQUIRED)									
S-LOC 10R	380-1		357 (400-1)						
CIRCLING	460-1 437 (500-1)	480-1 457 (500-1)	880-2½ 857 (900-2½)	880-2¾ 857 (900-2¾)					
REIL Rwy 10R and 28L					MRL all Rwy				
FAF to MAP 5.4 NM									
Knots					60	90	120	150	180
Min:Sec					5:24	3:36	2:42	2:10	1:48