

WAAS CH 69529 W10A	APP CRS 097°	Rwy Idg 6492 TDZE 23 Apt Elev 23
--	------------------------	---

RNAV (GPS) RWY 10R

TREASURE COAST INTL (FPR)

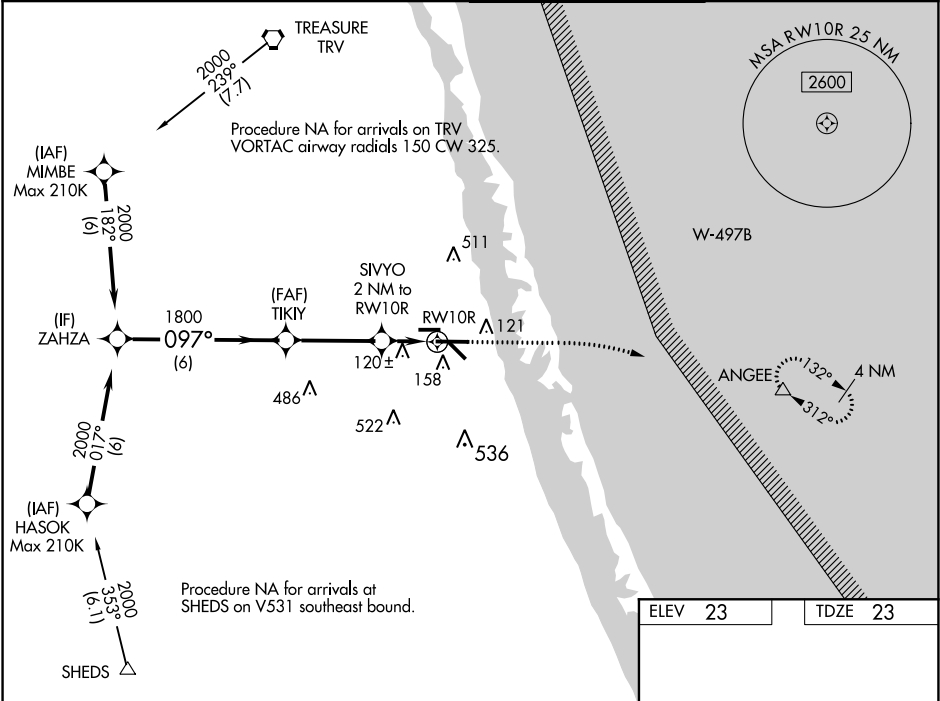
⚠

Baro-VNAV NA when using Vero Beach altimeter setting. For uncompensated Baro-VNAV systems, LNAV/VNAV NA below -1°C (31°F) or above 54°C (130°F). When local altimeter setting not received, use Vero Beach altimeter setting and increase all DA 23 feet and all MDA 40 feet; increase LPV all Cats, LNAV/VNAV all Cats and LNAV Cats C/D visibility 1⁄8 mile, and increase Circling Cat C/D visibility 1⁄4 mile. DME/DME RNP-0.3 NA. VDP NA with Vero Beach altimeter setting.

MISSED APPROACH:

Climb to 480 then climbing right turn to 2000 direct ANGEE and hold.

ATIS 134.825	PALM BEACH APP CON 132.8	FORT PIERCE TOWER ★ 128.2 (CTAF) 0	GND CON 119.55
------------------------	------------------------------------	--	--------------------------



VGSI and RNAV glidepath not coincident (VGSI Angle 3.00/TCH 52).		480	2000	ANGEE
ZAHZA		TIKIY	SIVYO	ANGEE
2000		1800	2 NM to RW10R	△
GP 3.00°		1800	*1 NM to RW10R	
TCH 49		*700	RW10R	
6 NM		3.4 NM	1 NM	1 NM
CATEGORY	A	B	C	D
LPV DA		273-3⁄4	250 (300-3⁄4)	
LNAV/VNAV DA		348-1	325 (400-1)	
LNAV MDA		380-1	357 (400-1)	
CIRCLING	460-1 437 (500-1)	480-1 457 (500-1)	880-2½ 857 (900-2½)	880-2¾ 857 (900-2¾)

ELEV 23

TDZE 23

REIL Rwy 10R and 28L 0

MIRL all Rwy 0