

LOC I-TMB 108.7	APP CRS 093°	Rwy Idg 6000 TDZE 10 Apt Elev 10
---------------------------	------------------------	---

ILS or LOC RWY 9R
MIAMI EXECUTIVE (TMB)

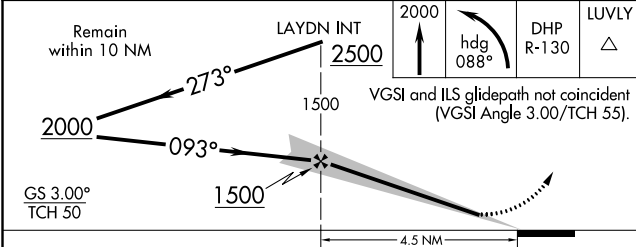
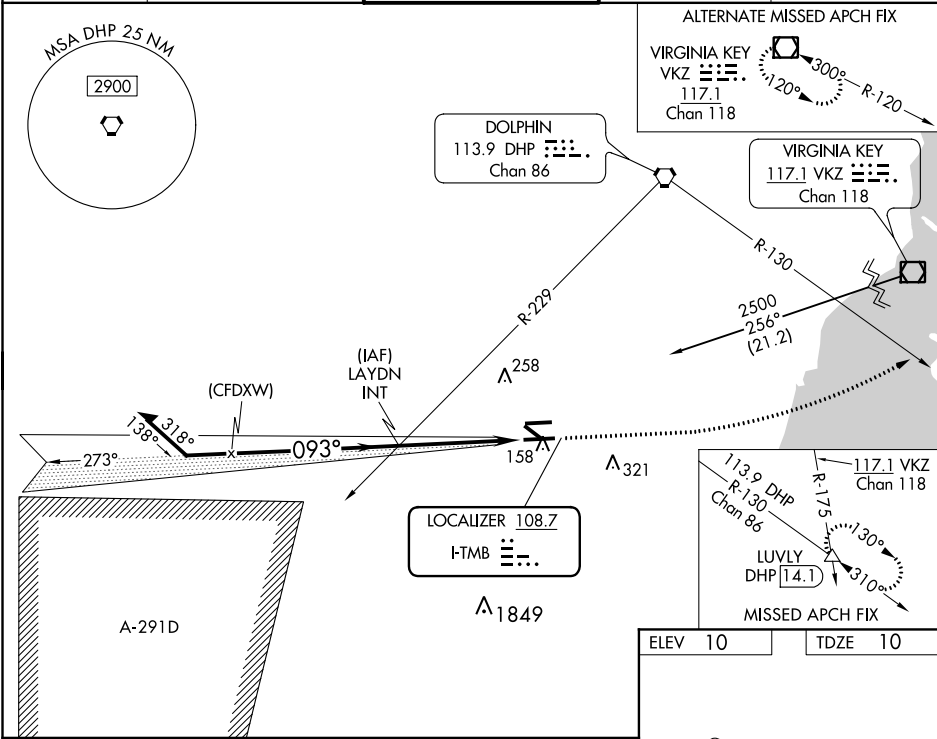
▼
▲

Circling Rwy 13, 31 NA at night. For inop ALS when using Miami Intl altimeter setting, increase Cat C/D visibility to 1 3/8 SM. When local altimeter setting not received, use Miami Intl altimeter setting and increase S-ILS 9R DA to 237 feet and all MDA 40 feet, increase S-LOC 9R Cat C/D visibility 1/8 SM.

MALSR
A5

MISSED APPROACH: Climb to 2000 then left turn on heading 088° and DHP VORTAC R-130 to LUVLY INT/DHP 14.1 DME and hold.

ATIS 124.0	MIAMI APP CON 125.5 354.1	TAMIAAMI TOWER ★ 118.9 (CTAF) 0	GND CON 121.7	CLNC DEL 133.0
----------------------	-------------------------------------	--	-------------------------	--------------------------



ELEV 10	TDZE 10
---------	---------

REIL Rwy 13
HIRL Rwy 9R-27L
MIRL Rwy 9L-27R and 13-31
FAF to MAP 4.5 NM

Knots	60	90	120	150	180
Min:Seq	4:30	3:00	2:15	1:48	1:30

SE-3, 31 DEC 2020 to 28 JAN 2021

SE-3, 31 DEC 2020 to 28 JAN 2021