

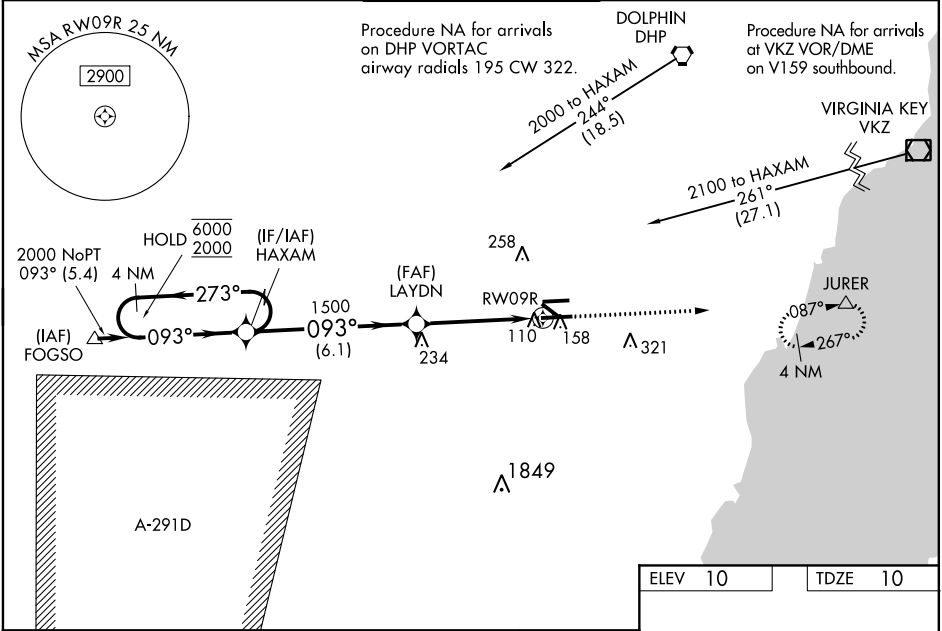
RNP APCH.

⚠ Circling Rwy 13, 31 NA at night. For uncompensated Baro-VNAV systems, LNAV/VNAV NA below -15°C or above 43°C. Baro-VNAV and VDP NA when using Miami Intl altimeter setting. When local altimeter setting not received, use Miami Intl altimeter setting and increase all DA by 27 feet and all MDA 40 feet, increase LNAV Cats C/D visibility ½ SM. For inop ALS when using Miami Intl altimeter setting, increase LNAV/VNAV all Cats visibility to ¾ SM, and LNAV Cat C/D visibility to 1 ½ SM.

MALSR

MISSED APPROACH:
Climb to 3000 direct JURER and hold, continue climb-in-hold to 3000.

ATIS 124.0	MIAMI APP CON 125.5 354.1	TAMiami TOWER ★ 118.9 (CTAF) 0	GND CON 121.7	CLNC DEL 133.0
---------------	------------------------------	-----------------------------------	------------------	-------------------



4 NM Holding Pattern HAXAM

GP 3.00° TCH 50

6000 2000

273° 093°

093°

1500

1500

6.1 NM

3.3 NM

1.2 NM

3000 JURER

*LNAV only.

*.2 NM to RW09R

RW09R

VGSI and RNAV glidepath not coincident (VGSI Angle 3.00/TCH 55).

CATEGORY	A	B	C	D
LPV DA	210-½ 200 (200-½)			
LNAV/VNAV DA	302-½ 292 (300-½)			
LNAV MDA	460-½ 450 (500-½)		460-7/8 450 (500-7/8)	
CIRCLING	460-1 450 (500-1)		460-1½ 640-2 450 (500-1½) 630 (700-2)	

