

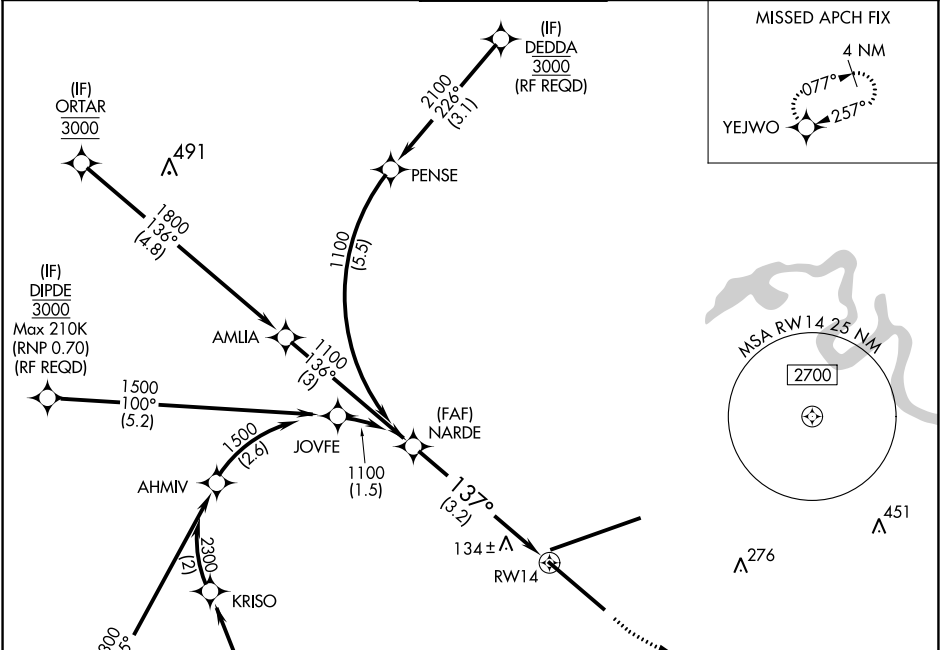


APP CRS	Rwy Idg	<b>7701</b>
<b>137°</b>	TDZE	<b>27</b>
	Apt Elev	<b>29</b>

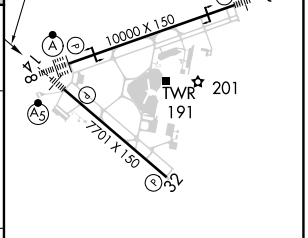
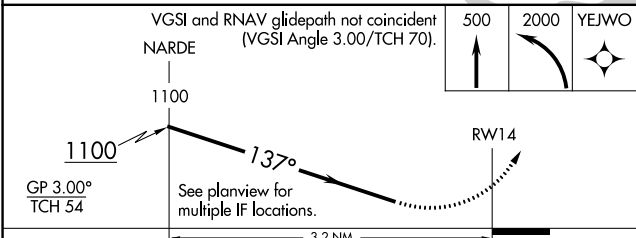
RNAV (RNP) Y RWY 14  
JACKSONVILLE INTL (JAX)

 For uncompensated Baro-VNAV systems, procedure NA below -5°C (23°F) or above 54°C (130°F). GPS required. For inoperative MALSR, increase RNP 0.30 all Cnts visibility to 1½ mile.	MALSR 	MISSED APPROACH: Climb to 500 then climbing left turn to 2000 direct YEJWO and hold.
---	---	--

D-ATIS <b>125.85</b>	JACKSONVILLE APP CON <b>119.0 269.9</b>	JACKSONVILLE TOWER <b>118.3 317.7</b>	GND CON <b>121.9 348.6</b>	CLNC DEL <b>119.5 290.275</b>
-------------------------	--	--	-------------------------------	----------------------------------



ELEV 29	TDZE 27
---------	---------



CATEGORY	A	B	C	D
RNP 0.30 DA	389-1 362 (400-1)			
AUTHORIZATION REQUIRED				

REIL Rwy 32  
TDZ/CL Rwy 8, 14, and 26  
HIRL Rwy 8-26 and 14-32

SE-3, 31 DEC 2020 to 28 JAN 2021

SE-3, 31 DEC 2020 to 28 JAN 2021