

APP CRS	Rwy Idg	10000
257°	TDZE	27
	Apt Elev	29

RNAV (RNP) Y RWY 26
JACKSONVILLE INTL (JAX)

T For uncompensated Baro-VNAV systems, procedure NA below -5°C (23°F) or above 54°C (130°F). GPS required. For inoperative MALSR, increase RNP 0.30 all Cats visibility to 1¼ mile.

MALS



MISSED APPROACH: Climb to 2000 on track 257° to UDAQI and hold.

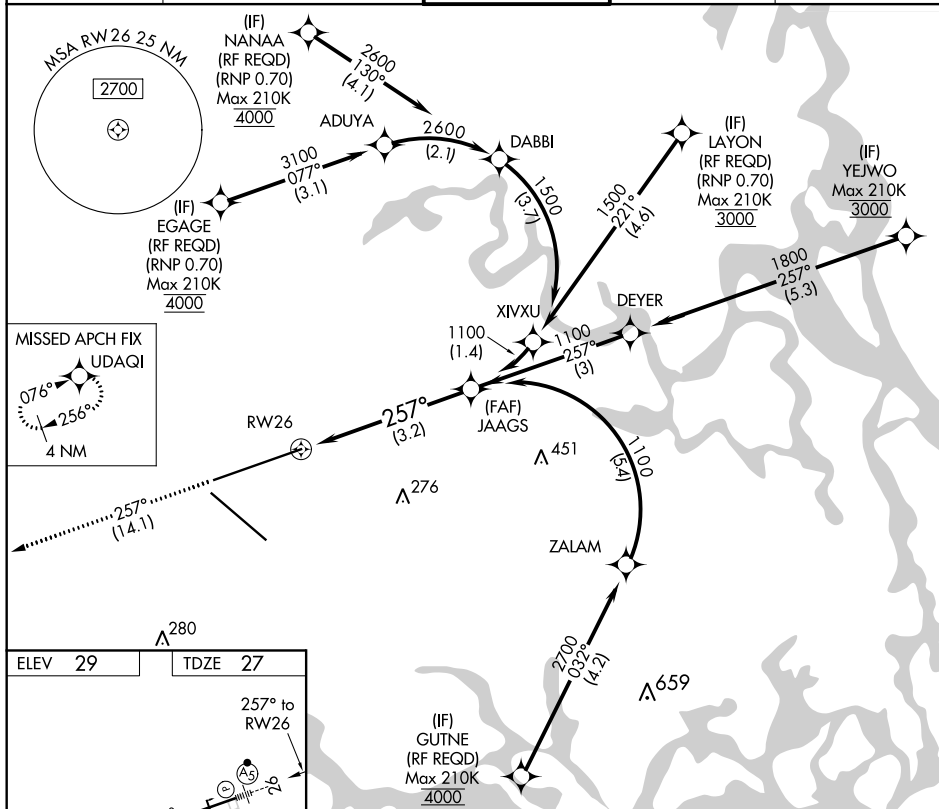
D-ATIS
125.85

JACKSONVILLE APP CON
119.0 269.9

JACKSONVILLE TOWER
118.3 317.7

GND CON
21.9 348.6

CLNC DEL
119.5 290.275



ELEV 29		TDZE 27
---------	--	---------

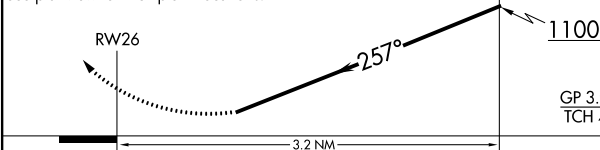
257° to

RW26

The map shows a residential area with streets and buildings. A large area is labeled '10000 X 150' and another area is labeled '7701 X 150'. A tower is labeled 'TWR 191'. There are also labels for 'A1', 'A5', and 'A6'.

2000	UDAQI	VGSI and RNAV glidepath not coincident (VGSI Angle 3.00/TCH 70).
------	-------	--

See planview for multiple IF locations.



REIL Rwy 32
TDZ/CL Rwy 8, 14, and 26
HIRL Rwy 8-26 and 14-32

JACKSONVILLE, FLORIDA
Amdt 1A 11DEC14

30°30'N-81°41'W

JACKSONVILLE INTL (JAX)

RNAV (RNP) Y RWY 26

SE-3, 31 DEC 2020 to 28 JAN 2021

SE-3, 31 DEC 2020 to 28 JAN 2021