

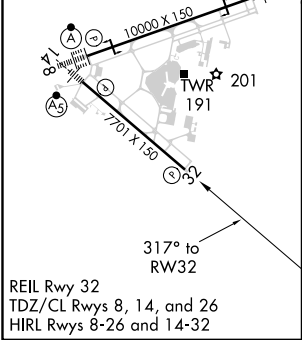
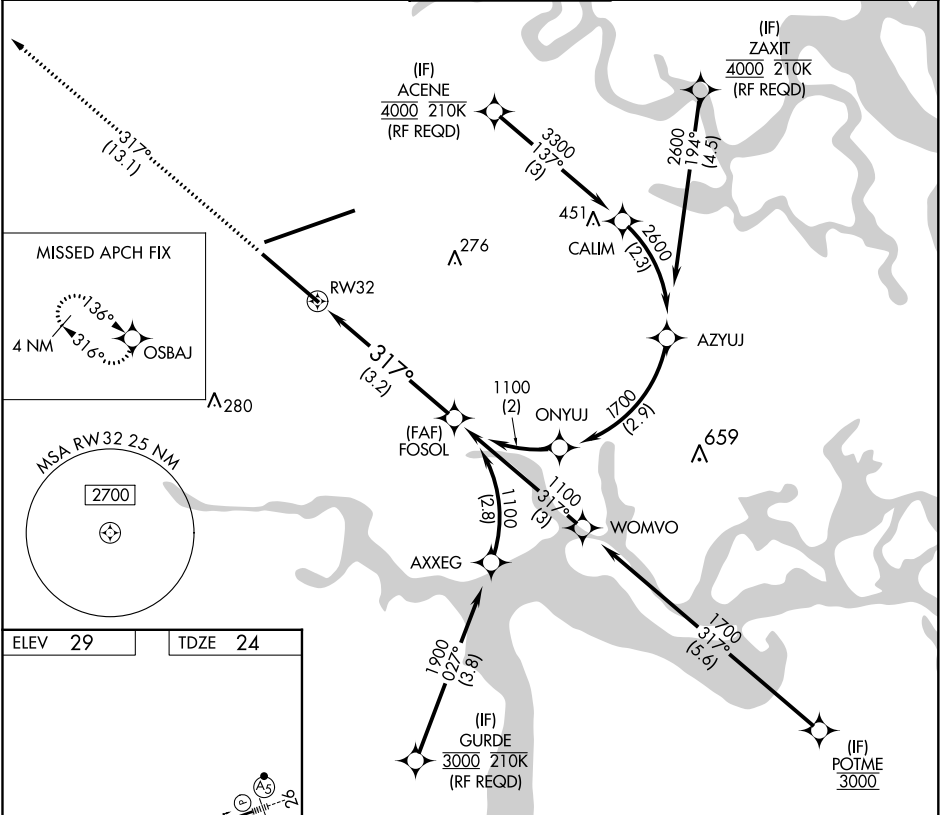
APP CRS	Rwy Idg	7701
317°	TDZE	24
	Apt Elev	29

RNAV (RNP) Y RWY 32
JACKSONVILLE INTL (JAX)

▽ For uncompensated Baro-VNAV systems, procedure NA below -5°C (23°F) or above 54°C (130°F). GPS required.

MISSED APPROACH: Climb to 2000 on track 317° to OSBAJ and hold.

D-ATIS 125.85	JACKSONVILLE APP CON 119.0 269.9	JACKSONVILLE TOWER 118.3 317.7	GND CON 121.9 348.6	CLNC DEL 119.5 290.275
------------------	-------------------------------------	-----------------------------------	------------------------	---------------------------



2000 ↑ tr 317°	OSBAJ 	VGSI and RNAV glidepath not coincident (VGSI Angle 3.00/TCH 67).	FOSOL 1100	
RW32		317°	1100	
See planview for multiple IF locations.			GP 3.00° TCH 50	
3.2 NM				
CATEGORY	A	B	C	D
RNP 0.11 DA		359-1 1/8	334 (400-1 1/8)	
RNP 0.30 DA		423-1 3/8	399 (400-1 3/8)	
AUTHORIZATION REQUIRED				

SE-3, 31 DEC 2020 to 28 JAN 2021

SE-3, 31 DEC 2020 to 28 JAN 2021