

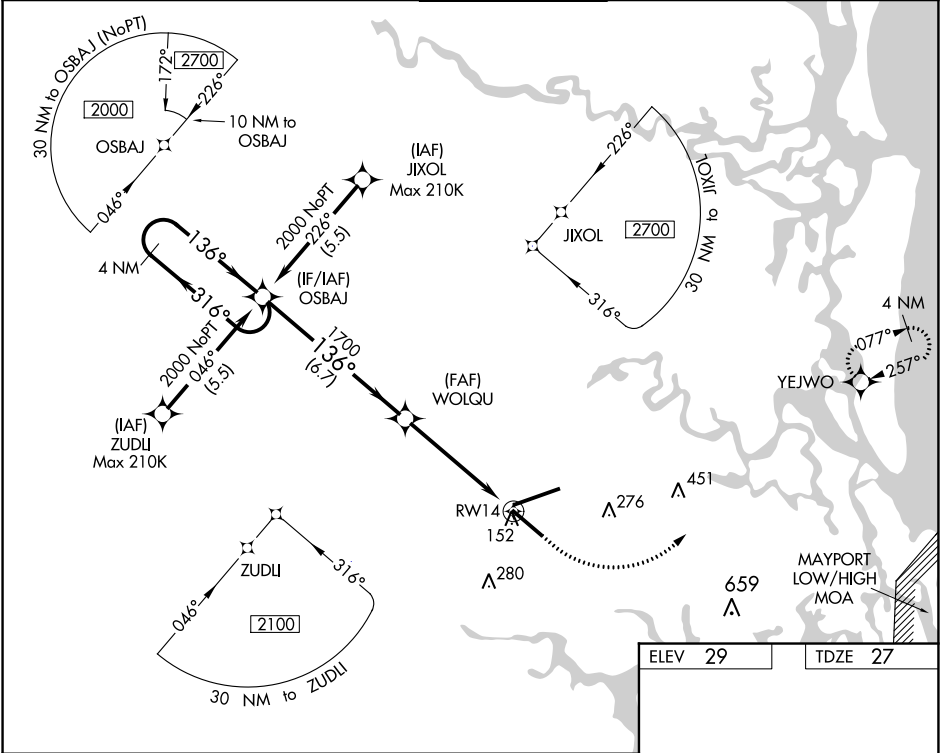


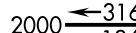
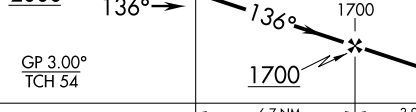
WAAS CH <b>70626</b> <b>W14A</b>	APP CRS <b>136°</b>	Rwy Idg TDZE <b>27</b> Apt Elev <b>29</b>	<b>7701</b>
--	------------------------	---	-------------

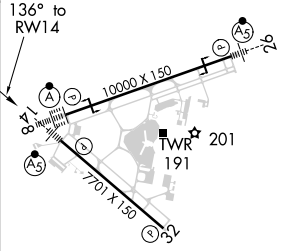
**RNAV (GPS) Z RWY 14**  
JACKSONVILLE INTL (JAX)

 For uncompensated Baro-VNAV systems, LNAV/VNAV NA below -5°C (23°F) or above 54°C (130°F). For inoperative MALSR, increase LNAV/VNAV all Cts visibility to 1½ miles and increase LNAV Cts A/B to 1 mile. DME/DME RNP-0.3 NA. Helicopter visibility reduction below ¾ SM NA.	 MALSR	MISSED APPROACH: Climb to 500 then climbing left turn to 2000 direct YEJWO and hold.
--	--	---

D-ATIS <b>125.85</b>	JACKSONVILLE APP CON <b>119.0 269.9</b>	JACKSONVILLE TOWER <b>118.3 317.7</b>	GND CON <b>121.9 348.6</b>	CLNC DEL <b>119.5 290.275</b>
-------------------------	--	--	-------------------------------	----------------------------------



4 NM Holding Pattern VGSI and RNAV glidepath not coincident (VGSI Angle 3.00/TCH 70).				500	2000	YEJWO
				*1.2 NM to RWY14 *RNAV only.		
						
CATEGORY	A	B	C	D		
LPV DA		227-½	200 (200-½)			
LNAV/VNAV DA		363-¾	336 (400-¾)			
LNAV MDA	480-¾	453 (500-¾)	480-⅞	453 (500-⅞)		
CIRCLING	520-1	491 (500-1)	520-1½ 491 (500-1½)	640-2 611 (700-2)		

ELEV 29	TDZE 27
	
REIL Rwy 32 TDZ/CL Rwy 8, 14, and 26 HIRL Rwy 8-26 and 14-32	

SE-3, 31 DEC 2020 to 28 JAN 2021

SE-3, 31 DEC 2020 to 28 JAN 2021