

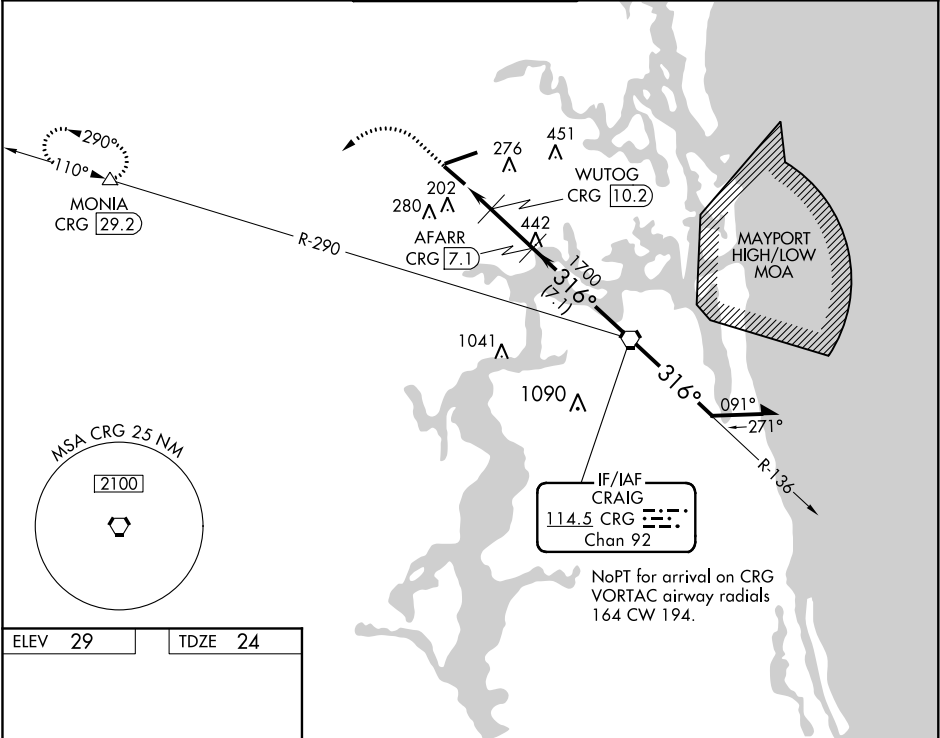
| | | | |
|------------|---------|----------|------|
| VORTAC CRG | APP CRS | Rwy Idg | 7701 |
| 114.5 | 316° | TDZE | 24 |
| Chan 92 | | Apt Elev | 29 |

VOR/DME RWY 32
JACKSONVILLE INTL (JAX)

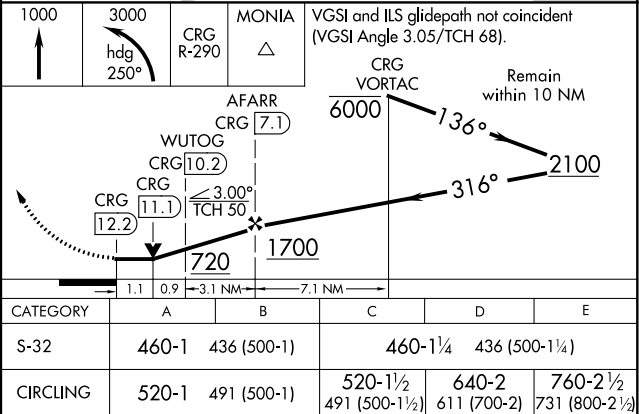
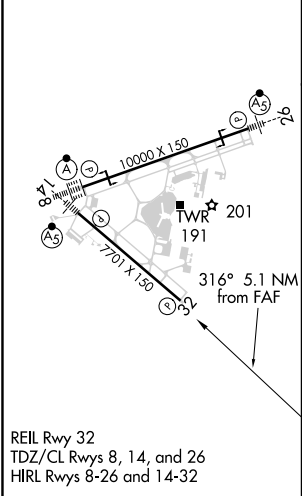
Helicopter visibility reduction by below ¾ mile NA.
Cat E procedure turn NA.

MISSED APPROACH: Climb to 1000 then climbing left turn to 3000 on heading 250° and on CRG VORTAC R-290 to MONIA/CRG 29.2 DME and hold.

| | | | | |
|--------|----------------------|--------------------|-------------|---------------|
| D-ATIS | JACKSONVILLE APP CON | JACKSONVILLE TOWER | GND CON | CLNC DEL |
| 125.85 | 119.0 269.9 | 118.3 317.7 | 121.9 348.6 | 119.5 290.275 |



| | |
|---------|---------|
| ELEV 29 | TDZE 24 |
|---------|---------|



SE-3, 31 DEC 2020 to 28 JAN 2021

SE-3, 31 DEC 2020 to 28 JAN 2021