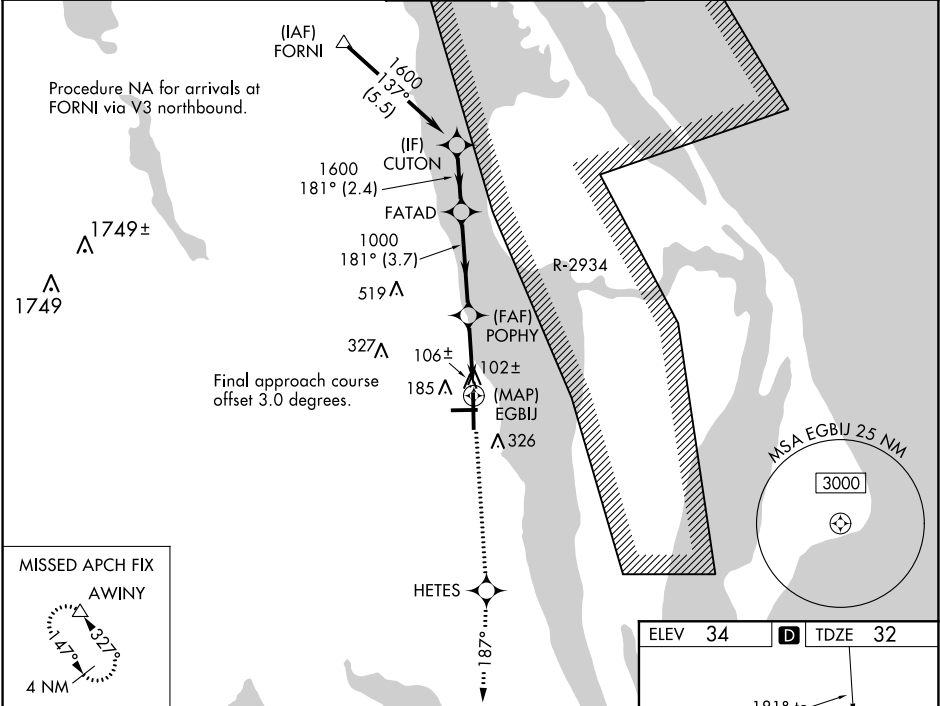


WAAS CH <b>56612</b> <b>W18B</b>	APP CRS <b>181°</b>	Rwy Idg <b>6930</b> TDZE <b>32</b> Apt Elev <b>34</b>
--	------------------------	---

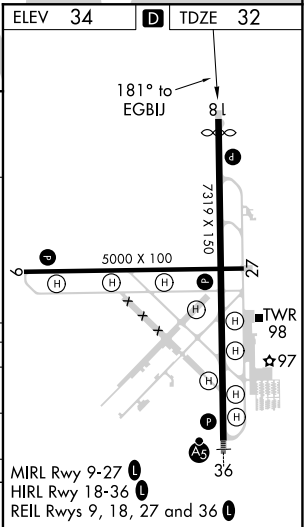
RNAV (GPS) Z RWY 18  
SPACE COAST RGNL (TIX)

▼ Baro-VNAV NA when using Melbourne altimeter setting. For uncompensated Baro-VNAV systems, LNAV/VNAV NA below -15°C (5°F) or above 47°C (116°F). DME/DME RNP-0.3 NA. Visibility reduction by helicopters NA. When control tower closed, use Melbourne altimeter setting.	MISSED APPROACH: Climb to 3000 direct HETES and via track 187° to AWINY and hold.
---	---

ATIS <b>120.625</b>	ORLANDO APP CON <b>134.95 281.425</b>	SPACE COAST TOWER ★ <b>118.9 (CTAF) 0</b>	GND CON <b>121.85</b>	UNICOM <b>122.95</b>
------------------------	--	--	--------------------------	-------------------------



VGSI and RNAV glidepath not coincident (VGSI Angle 3.00/TCH 44).					3000 ↑	HETES ✧	tr 187°	AWINY △
Procedure Turn NA	CUTON	FATAD			POPHY	EGBIJ		
1600	181°	1600	187°	1000				
GP 3.00° TCH 50	2.4 NM		3.7 NM		2.9 NM			
CATEGORY	A		B		C		D	
LPV DA			332-1		300 (300-1)			
LNAV/ VNAV DA			377-1¼		345 (400-1¼)			
MELBOURNE ALTIMETER SETTING MINIMUMS								
LNAV/ VNAV DA			437-1½		405 (500-1½)			



SE-3, 31 DEC 2020 to 28 JAN 2021

SE-3, 31 DEC 2020 to 28 JAN 2021