

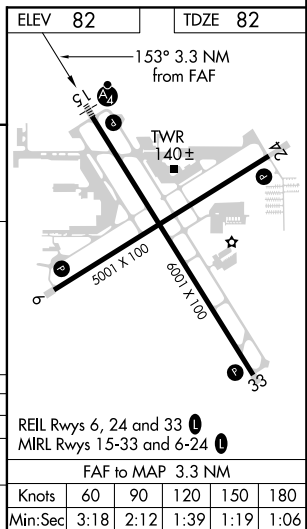
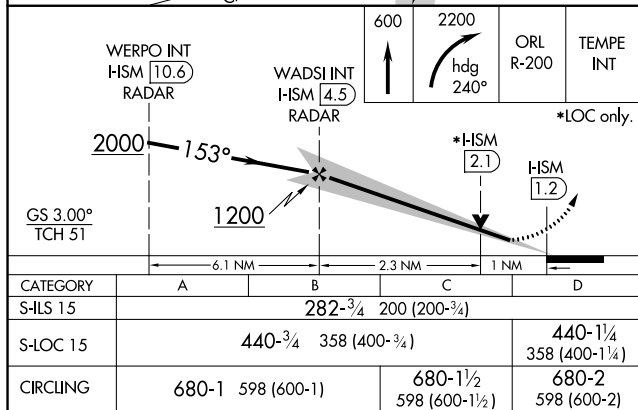
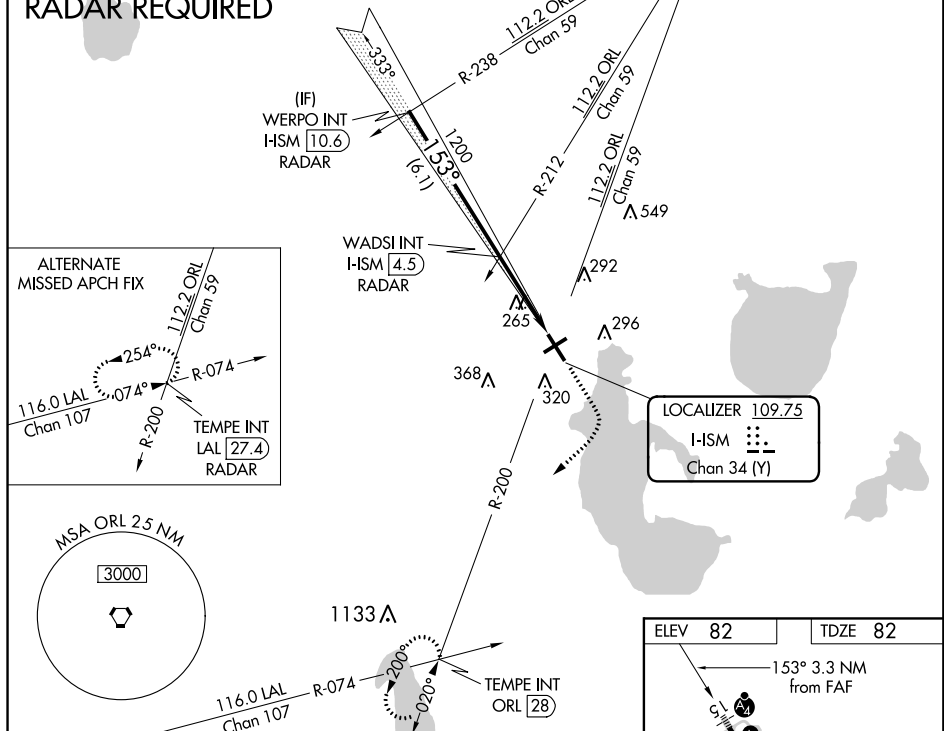
ILS or LOC RWY 15
KISSIMMEE GATEWAY (TSM)

MALSF

MISSED APPROACH: Climb to 600 then climbing right turn to 2200 on heading 240° and ORL VORTAC R-200 to TEMPE INT/ORL 28 DME and hold.

ATIS	ORLANDO APP CON	KISSIMEE TOWER ★	CLNC DEL	CLNC DEL	GND CON	UNICOM
128.775	119.4 351.9	124.45 (CTAF) 0	121.7	119.95 (when twr closed)	121.7	122.95

RADAR REQUIRED



SE-3, 31 DEC 2020 to 28 JAN 2021