

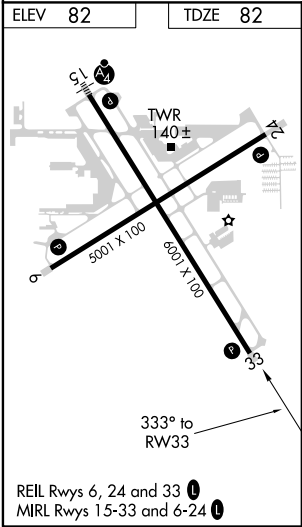
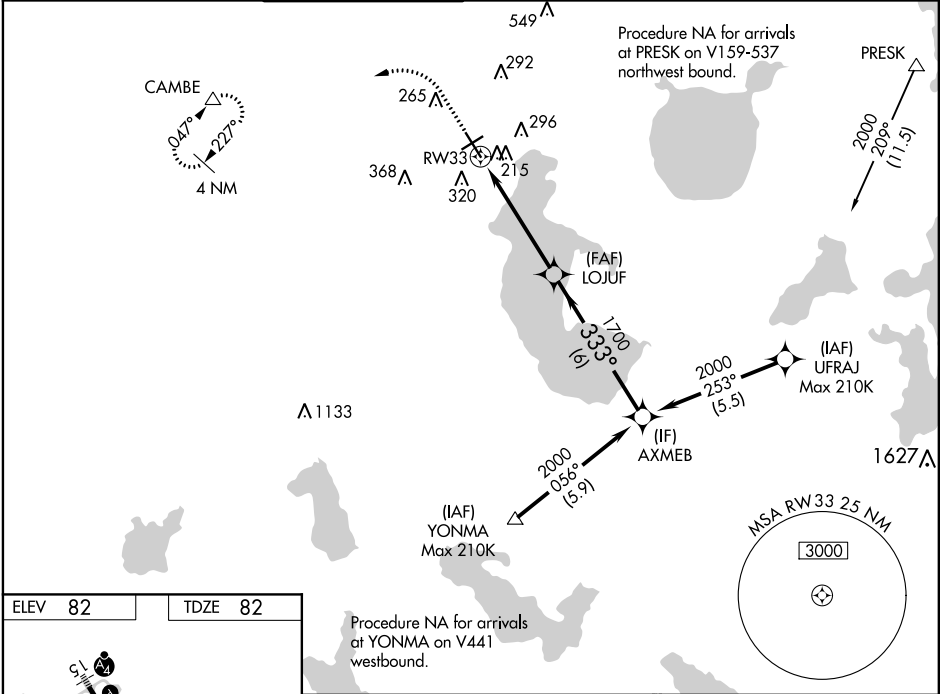
WAAS CH <b>42900</b> <b>W33A</b>	APP CRS <b>333°</b>	Rwy Idg TDZE Apt Elev <b>6001</b> <b>82</b> <b>82</b>
--	------------------------	--

RNAV (GPS) RWY 33  
KISSIMMEE GATEWAY (ISM)

**⚠** Baro-VNAV NA when using Orlando Intl altimeter setting. For uncompensated Baro-VNAV systems, LNAV/VNAV NA below -15°C (5°F) or above 43°C (109°F). Helicopter visibility reduction below 3/4 SM NA. DME/DME RNP-0.3 NA. When local altimeter setting not received, use Orlando Intl altimeter setting and increase all DA 27 feet and all MDA 40 feet. Increase LNAV/VNAV all Cats visibility 1/8 mile and LNAV Cats C/D 1/4 mile.

**MISSED APPROACH:**  
Climb to 540 then climbing left turn to 2000 direct CAMBE and hold.

ATIS <b>128.775</b>	ORLANDO APP CON <b>119.4 351.9</b>	KISSIMMEE TOWER ★ <b>124.45</b> (CTAF) <b>0</b>	CLNC DEL <b>121.7</b>	CLNC DEL <b>119.95</b> (when twr closed)	GND CON <b>121.7</b>	UNICOM <b>122.95</b>
------------------------	---------------------------------------	--	--------------------------	--	-------------------------	-------------------------



540    2000    CAMBE				
RW33    LOJUF    AXMEB				
2000    333°    1700				
GP 3.00° TCH 45				
5 NM    6 NM				
CATEGORY	A	B	C	D
LPV DA	332-1 250 (300-1)			
LNAV/ VNAV DA	402-1 320 (400-1)			
LNAV MDA	480-1 398 (400-1)		480-1 398 (400-1 1/8)	
CIRCLING	620-1 538 (600-1)		620-1 538 (600-1 1/2)	
			640-2 558 (600-2)	

SE-3, 31 DEC 2020 to 28 JAN 2021

SE-3, 31 DEC 2020 to 28 JAN 2021