

WAAS CH <b>69229</b> <b>W06A</b>	APP CRS <b>063°</b>	Rwy Idg TDZE Apt Elev	<b>5001</b> <b>82</b> <b>82</b>
--	------------------------	-----------------------------	---------------------------------------

RNAV (GPS) RWY 6

KISSIMMEE GATEWAY (ISM)

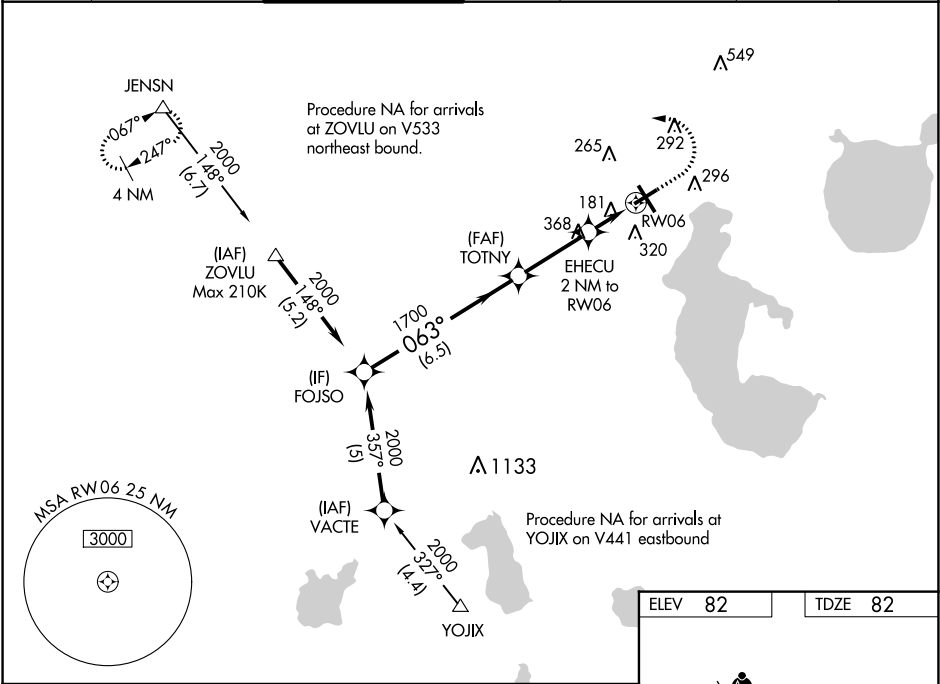
⚠

Baro-VNAV NA when using Orlando Intl altimeter setting. For uncompensated Baro-VNAV systems, LNAV/VNAV NA below -15°C (5°F) or above 43°C (109°F). DME/DME RNP-0.3 NA. Helicopter visibility reduction below ¾ SM NA. When local altimeter setting not received, use Orlando Intl altimeter setting and increase all DA 27 feet and all MDA 40 feet. Increase LNAV/VNAV all Cats and LNAV Cats C/D visibility ½ mile.

MISSED APPROACH:

Climb to 600 then climbing left turn to 4000 direct JENSIN and hold, continue climb-in-hold to 4000.

ATIS <b>128.775</b>	ORLANDO APP CON <b>119.4 351.9</b>	KISSIMMEE TOWER ★ <b>124.45 (CTAF) 0</b>	CLNC DEL <b>121.7</b>	CLNC DEL <b>119.95</b> (when twr closed)	GND CON <b>121.7</b>	UNICOM <b>122.95</b>
------------------------	---------------------------------------	---	--------------------------	--	-------------------------	-------------------------



FOJSO

2000

063°

1700

TOTNY

1700

EHECU

2 NM to RW06

RW06

600

4000

JENSIN

△

\*LNAV only.

\*760

6.5 NM

3 NM

2 NM

GP 3.00°  
TCH 45

CATEGORY	A	B	C	D
LPV DA	348-1		266 (300-1)	
LNAV/VNAV DA	457-1¼		375 (400-1¼)	
LNAV MDA	440-1		358 (400-1)	
CIRCLING	620-1	538 (600-1)	620-1½ 538 (600-1½)	640-2 558 (600-2)

ELEV 82

TDZE 82

REIL Rwy 6, 24 and 33

MRL Rwy 15-33 and 6-24