


VORTAC ORL <b>112.2</b> Chan <b>59</b>	APP CRS <b>020°</b>	Rwy Idg TDZE Apt Elev	N/A N/A <b>82</b>
--	------------------------	-----------------------------	-------------------------

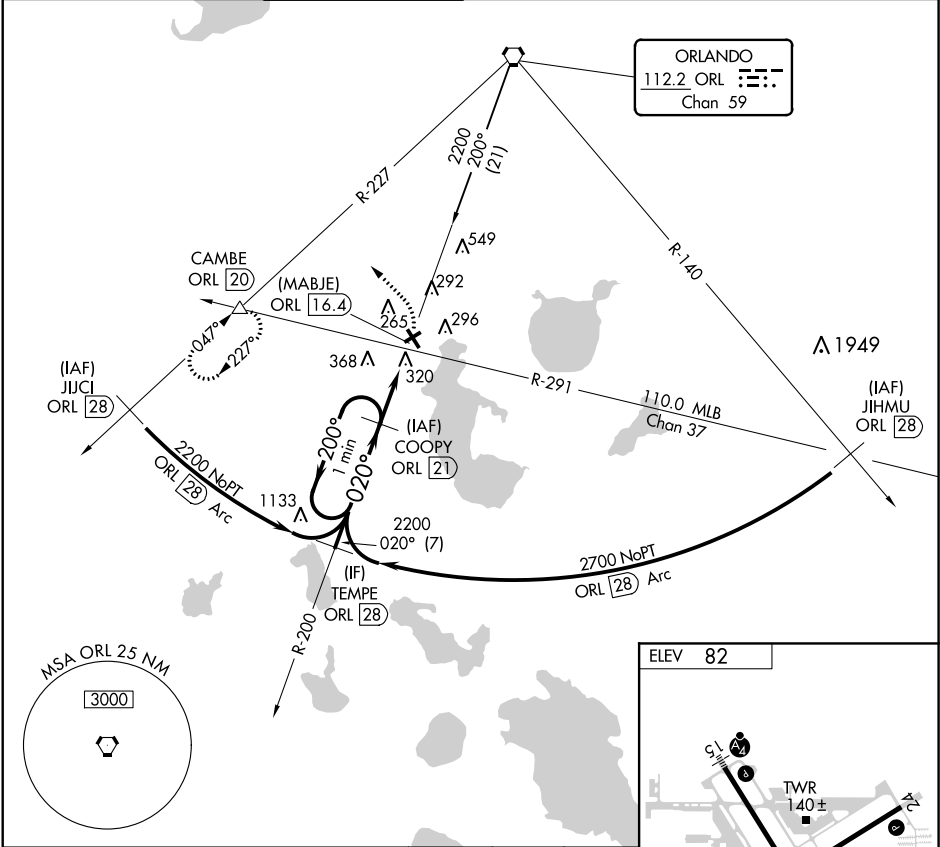
VOR/DME-A  
KISSIMMEE GATEWAY (ISM)



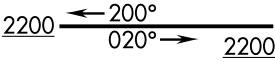
When local altimeter setting not received, use Orlando Intl altimeter setting and increase all MDA 40 feet.

MISSED APPROACH: Climbing left turn to 4000 on heading 315° and ORL R-227 to CAMBE INT/ORL VORTAC 20 DME and hold.

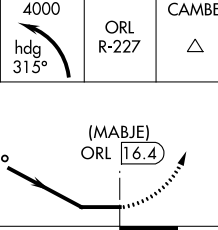
ATIS <b>128.775</b>	ORLANDO APP CON <b>119.4 351.9</b>	KISSIMMEE TOWER ★ <b>124.45</b> (CTAF) <b>0</b>	CLNC DEL <b>121.7</b>	CLNC DEL <b>119.95</b> (when twr closed)	GND CON <b>121.7</b>	UNICOM <b>122.95</b>
------------------------	---------------------------------------	--	--------------------------	--	-------------------------	-------------------------



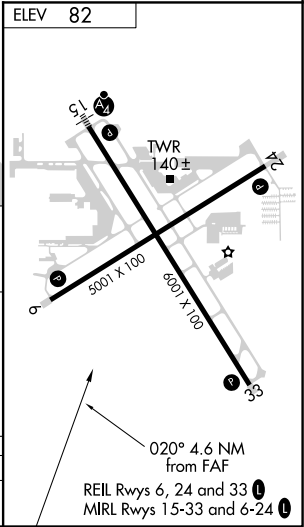
One Minute Holding Pattern



COOPY ORL 21



CATEGORY	A	B	C	D
CIRCLING	640-1	558 (600-1)	640-1½ 558 (600-1½)	640-2 558 (600-2)



SE-3, 31 DEC 2020 to 28 JAN 2021

SE-3, 31 DEC 2020 to 28 JAN 2021