

LOC I-FXE 111.1	APP CRS 091°	Rwy Idg 6002 TDZE 13 Apt Elev 13
---------------------------	------------------------	---

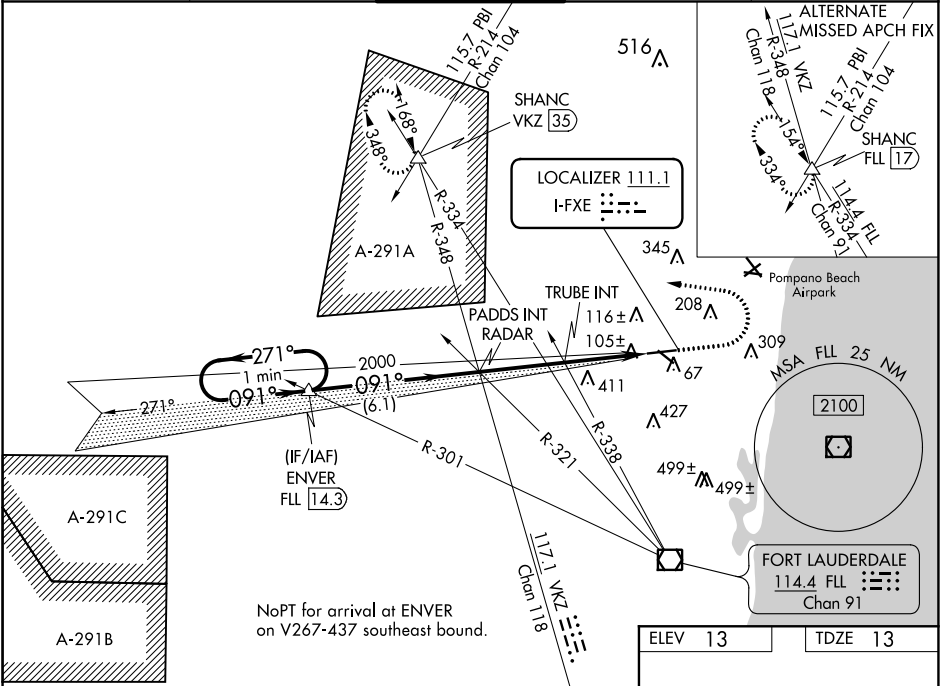
ILS or LOC RWY 9
FORT LAUDERDALE EXECUTIVE (FXE)

⚠ When local altimeter setting not received, use Fort Lauderdale/Hollywood Intl altimeter setting and increase S-ILS 9 DA to 231 and increase all MDA 20 feet.

MALS

MISSED APPROACH: Climb to 1000 then climbing left turn to 2100 on heading 285° and on VKZ VOR/DME R-348 to SHANC INT/VKZ 35 DME and hold.

ATIS 119.85	MIAMI APP CON 119.7 306.3	EXECUTIVE TOWER 120.9 239.3	GND CON 121.75	CLNC DEL 127.95
-----------------------	-------------------------------------	---------------------------------------	--------------------------	---------------------------



***500** when using Fort Lauderdale/Hollywood Intl altimeter setting.

One Minute Holding Pattern

ENVER PADDS INT RADAR

2000 091° 271°

GS 3.00° TCH 55

2000 091°

TRUBE INT

2000

*480

6.1 NM 3.1 NM 3 NM

1000 2100 hdg 285° VKZ R-348 SHANC

*LOC only

CATEGORY	A	B	C	D
S-ILS 9	213-½ 200 (200-½)			
S-LOC 9	480-½ 467 (500-½) 480-1 467 (500-1)			
CIRCLING	520-1 507 (600-1)	620-1 607 (700-1)	780-2¼ 767 (800-2¼)	780-2½ 767 (800-2½)
TRUBE FIX MINIMUMS (DUAL VOR RECEIVERS REQUIRED)				
S-LOC 9	360-½ 347 (400-½)		360-¾ 347 (400-¾)	
CIRCLING	520-1 507 (600-1)	620-1 607 (700-1)	780-2¼ 767 (800-2¼)	780-2½ 767 (800-2½)

ELEV 13 TDZE 13

091° 6.1 NM from FAF

REIL Rwy 13, 27 and 31
HIRL Rwy 9-27
MIRL Rwy 13-31

FAF to MAP 6.1 NM

Knots	60	90	120	150	180
Min:Sec	6:06	4:04	3:03	2:26	2:02

SE-3, 31 DEC 2020 to 28 JAN 2021

SE-3, 31 DEC 2020 to 28 JAN 2021