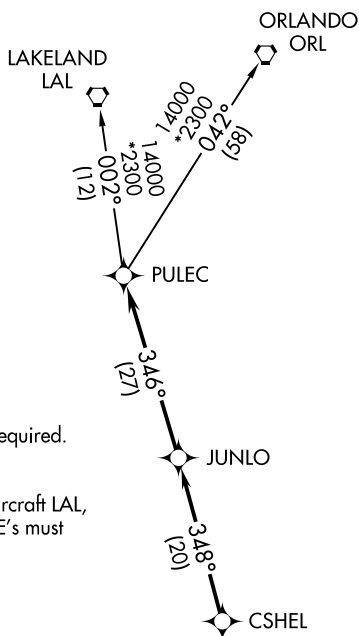


NAPLES MUNI (APF)  
NAPLES, FLORIDA

## CSHEL SIX DEPARTURE (RNAV)

**TOP ALTITUDE:**  
2000

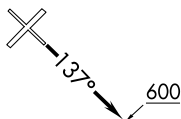


ATIS  
 134.225  
 CLNC DEL  
 118.0  
 CLNC DEL (When twr closed)  
 124.125  
 GND CON  
 121.6  
 NAPLES TOWER★  
 128.5 (CTAF)  
 FORT MYERS DEP CON★  
 124.125 371.85

NOTE: RADAR required.  
NOTE: DME/DME/IRU or GPS required.  
NOTE: RNAV 1.  
NOTE: For turbojet aircraft only.  
NOTE: For non-GPS equipped aircraft LAL, LBV, RSW, and SRQ DME's must be operational.

## TAKEOFF MINIMUMS

Rwys 5, 14, 23, 32: Standard.



NOTE: Chart not to scale.

## DEPARTURE ROUTE DESCRIPTION

TAKEOFF RUNWAYS 5, 23, 32: Climb on assigned heading for RADAR vectors to CSHEL, then on depicted route to PULEC, thence. . .

**TAKEOFF RUNWAY 14:** Climb heading 137° to 600, then on RADAR vectors to CSHEL, then on depicted route to PULEC, thence. . . .

...on (transition). Maintain 2000, or as assigned by ATC, expect filed altitude/flight level 10 minutes after departure.

LAKELAND TRANSITION (CSHEL6.LAL)  
ORLANDO TRANSITION (CSHEL6.ORK)

CSHEL SIX DEPARTURE (RNAV)

(CSHEL6.CSHEL) 03JAN19

NAPLES, FLORIDA  
NAPLES MUNI (APF)

SE-3, 31 DEC 2020 to 28 JAN 2021

SE-3, 31 DEC 2020 to 28 JAN 2021