

WAAS
CH **69314**
W23A

APP CRS
227°

Rwy ldg
TDZE
Apt Elev
5000
8
8

RNAV (GPS) RWY 23
NAPLES MUNI (APF')

RNP APCH.

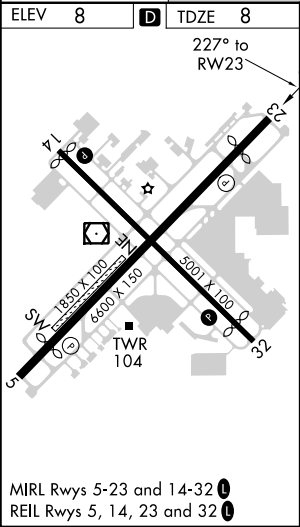
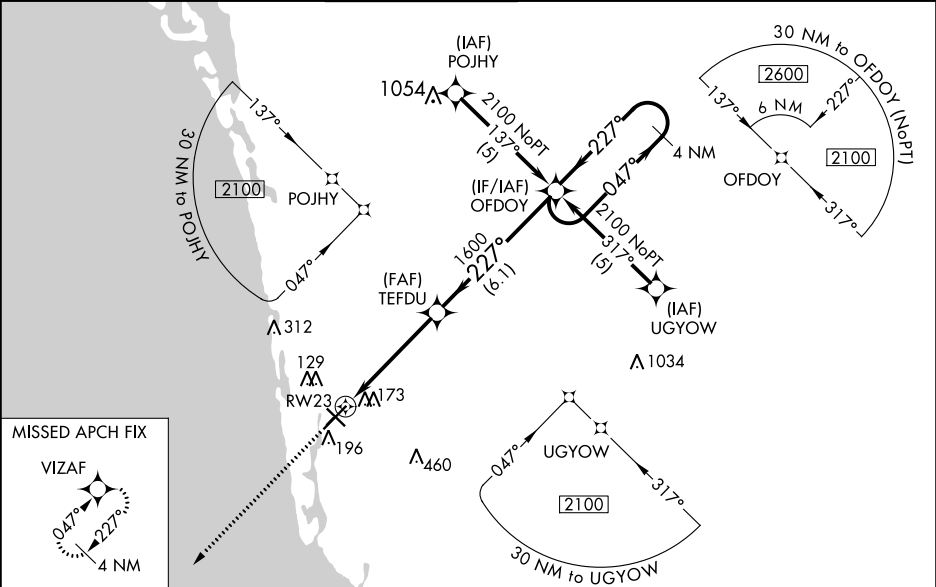
▼

▲

Inoperative table does not apply. Baro-VNAV NA when using Southwest Florida Intl altimeter setting. For uncompensated Baro-VNAV systems, LNAV/VNAV NA below -15°C or above 54°C. Rwy 23 helicopter visibility reduction below ¾ SM NA. When local altimeter setting not received, use Southwest Florida Intl altimeter setting and increase all DA 56 feet and all MDA 60 feet, increase LPV and LNAV/VNAV all. Cats visibility ¼ mile.

MISSED APPROACH: Climb to 2100 direct VIZAF and hold.

ATIS 134.225	FORT MYERS APP CON★ 124.125 371.85	NAPLES TOWER★ 128.5 (CTAF) 0	GND CON 121.6	CLNC DEL 118.0	CLNC DEL 124.125 (When twr closed)
------------------------	----------------------------------------------	----------------------------------------	-------------------------	--------------------------	-------------------------------------------------



2100	VIZAF	TEFDU	OFDOY	4 NM Holding Pattern
*LNAV only.		*1.2 NM to RW23		
		1600	047° → 2100	GP 3.00° TCH 44
		1.2 NM	3.6 NM	6.1 NM
CATEGORY	A	B	C	D
LPV DA	313-1 305 (400-1)			
LNAV/VNAV DA	461-1½ 453 (500-1½)			
LNAV MDA	440-1	432 (500-1)	440-1¼ 432 (500-1¼)	440-1½ 432 (500-1½)
CIRCLING	500-1	492 (500-1)	680-2 672 (700-2)	820-2¾ 812 (900-2¾)