

WAAS CH 73015 W05A	APP CRS 047°	Rwy ldg TDZE Apt Elev	5000 8 8
--	------------------------	-----------------------------	-------------------------------------

RNAV (GPS) RWY 5

NAPLES MUNI (APF')

RNP APCH.

▼

▲

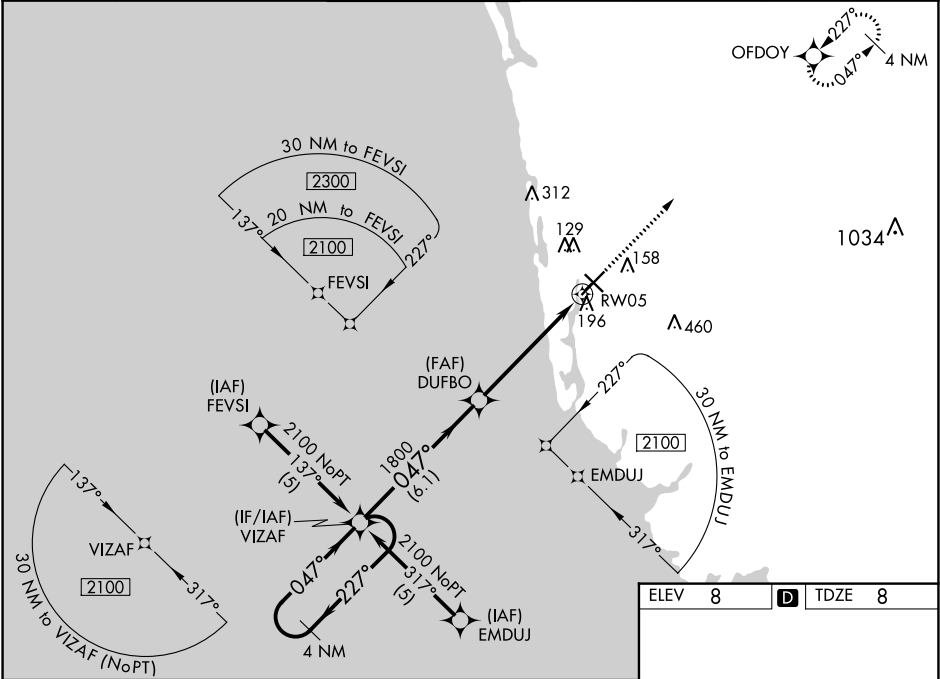
Baro-VNAV NA when using Southwest Florida Intl altimeter setting.

For uncompensated Baro-VNAV systems, LNAV/VNAV NA below -15°C or above 54°C.

When local altimeter setting not received, use Southwest Florida Intl altimeter setting and increase all DA 56 feet and all MDA 60 feet, increase LPV, LNAV/VNAV all Cats and LNAV Cats C/D visibility ¼ mile.

MISSED APPROACH: Climb to 2100 direct OFDOY and hold.

ATIS 134.225	FORT MYERS APP CON* 124.125 371.85	NAPLES TOWER* 128.5 (CTAF) 0	GND CON 121.6	CLNC DEL 118.0	CLNC DEL 124.125 (When twr closed)
------------------------	--	--	-------------------------	--------------------------	---



4 NM Holding Pattern		VGSI and RNAV glidepath not coincident (VGSI Angle 3.50/TCH 32).		2100	OFDOY
GP 3.00° TCH 40		VIZAF		*LNAV only.	
2100		047°		DUFBO	
047°		047°		*1.1 NM to RWY 5	
1800		1800		RWY 5	
6.1 NM		4.3 NM		1.1 NM	
CATEGORY	A	B	C	D	
LPV DA	295-1		287 (300-1)		
LNAV/VNAV DA	446-1½		438 (500-1½)		
LNAV MDA	460-1	452 (500-1)	460-1⅜ 452 (500-1⅜)	460-1½ 452 (500-1½)	
CIRCLING	500-1	492 (500-1)	680-2 672 (700-2)	820-2¾ 812 (900-2¾)	

