

20310

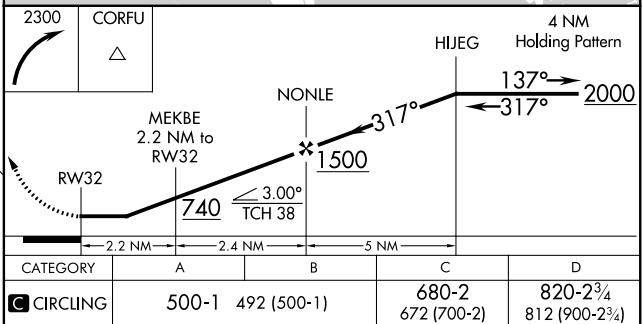
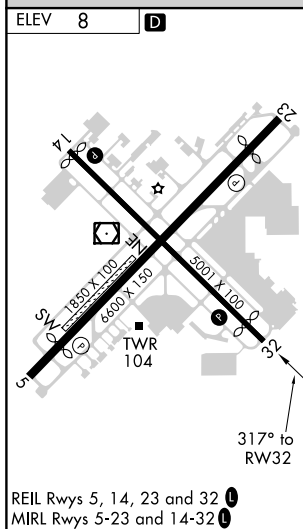
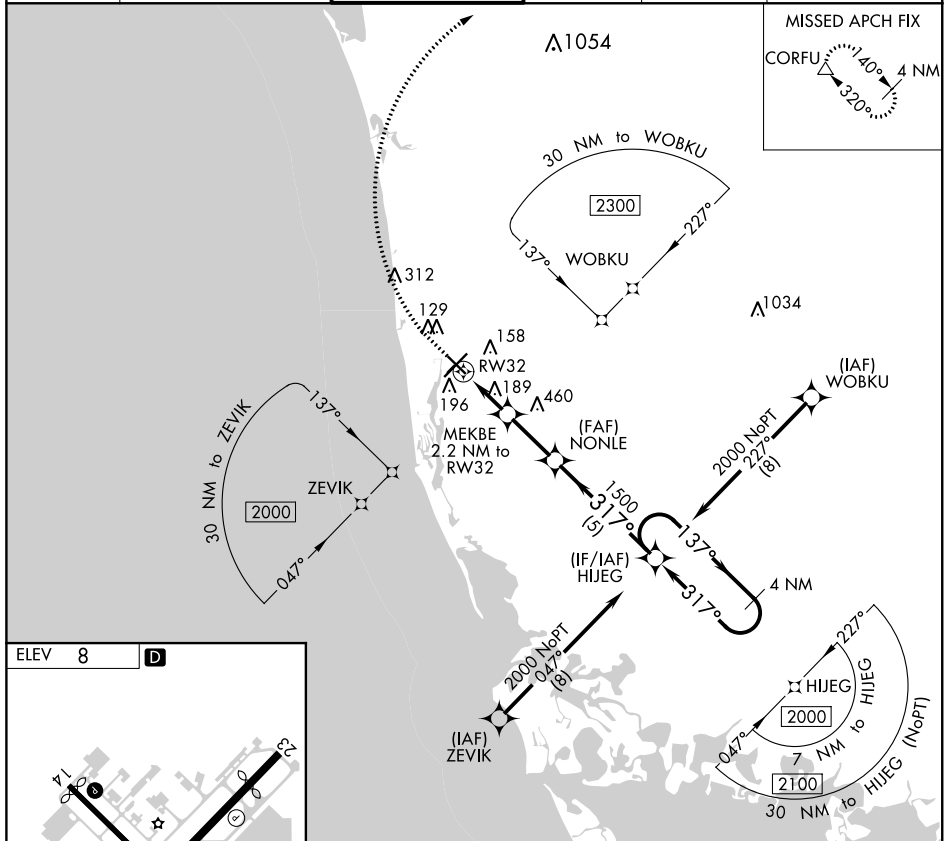
RNAV (GPS)-A

NAPLES MUNI (APF)

T When local altimeter not received, use Southwest Florida Intl altimeter
A setting and increase all MDA 60 feet and increase Cat D visibility $\frac{1}{4}$ mile.

MISSED APPROACH:
Climbing right turn to 2300
direct CORFU and hold.

ATIS 134.225	FORT MYERS APP CON★ 124.125 371.85	NAPLES TOWER★ 128.5 (CTAF) 0	GND CON 121.6	CLNC DEL 118.0	CLNC DEL 124.125 (When twr closed)
-----------------	---------------------------------------	---------------------------------	------------------	-------------------	--



NAPLES MUNI (APF)
RNAV (GPS)-A

SE-3, 31 DEC 2020 to 28 JAN 2021

SE-3, 31 DEC 2020 to 28 JAN 2021