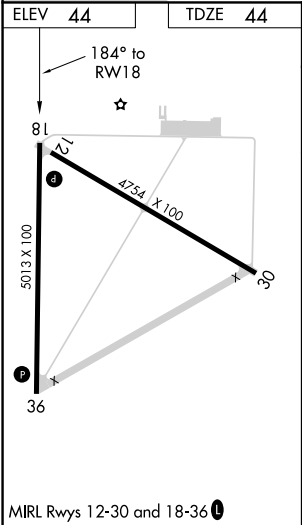
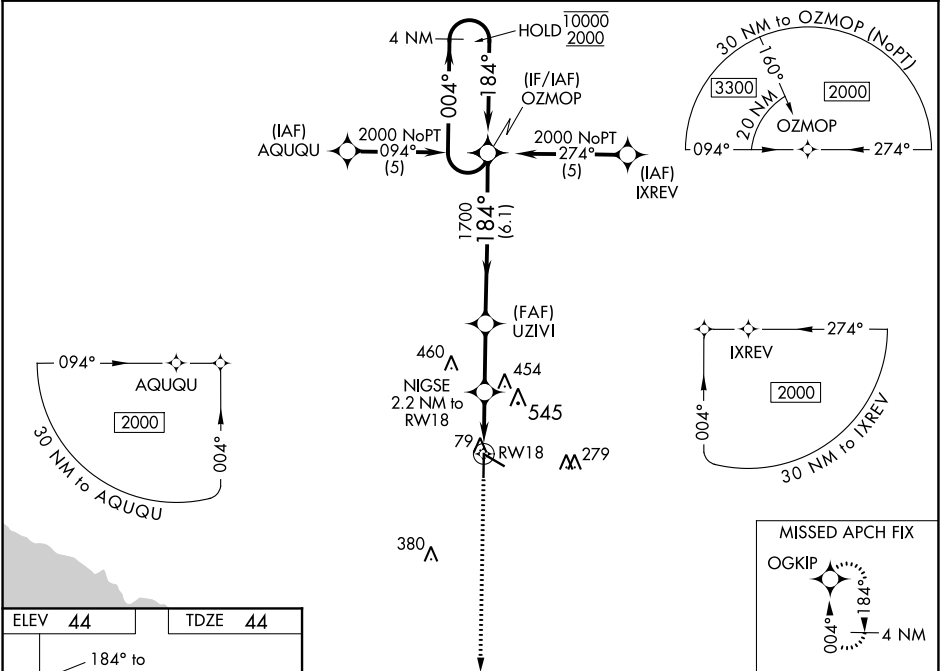


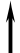

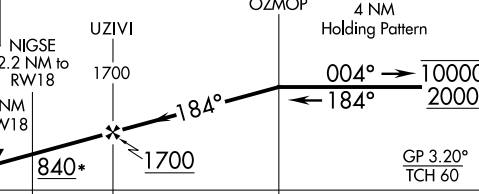
WAAS CH 49019 W18A	APP CRS 184°	Rwy Idg 5013 TDZE 44 Apt Elev 44
--	------------------------	---

RNAV (GPS) RWY 18
PERRY-FOLEY (F'PY)

RNP APCH. Circling to Rwy 36, 12 NA at night. Rwy 18 helicopter visibility reduction below ¾ SM NA. For uncompensated Baro-VNAV systems, LNAV/VNAV NA below -1.5°C or above 54°C.	MISSED APPROACH: Climb to 2000 direct OZMOP and hold.
--	---

AWOS-3PT 118.375	JACKSONVILLE CENTER 127.8 352.0	UNICOM 122.8 (CTAF) 0
----------------------------	---	---------------------------------



2000	OGKIP	VGSI and RNAV glidepath not coincident (VGSI Angle 4.00/TCH 35).			
					
*LNAV only.		GP 3.20° TCH 60			
CATEGORY	A	B	C	D	
LPV DA	356-1		312 (400-1)		NA
LNAV/ VNAV	977-3		933 (1000-3)		NA
LNAV MDA	660-1	616 (700-1)		660-1¾ 616 (700-1¾)	660-2 616 (700-2)
CIRCLING	660-1	616 (700-1)		660-1¾ 616 (700-1¾)	860-2¾ 816 (900-2¾)