

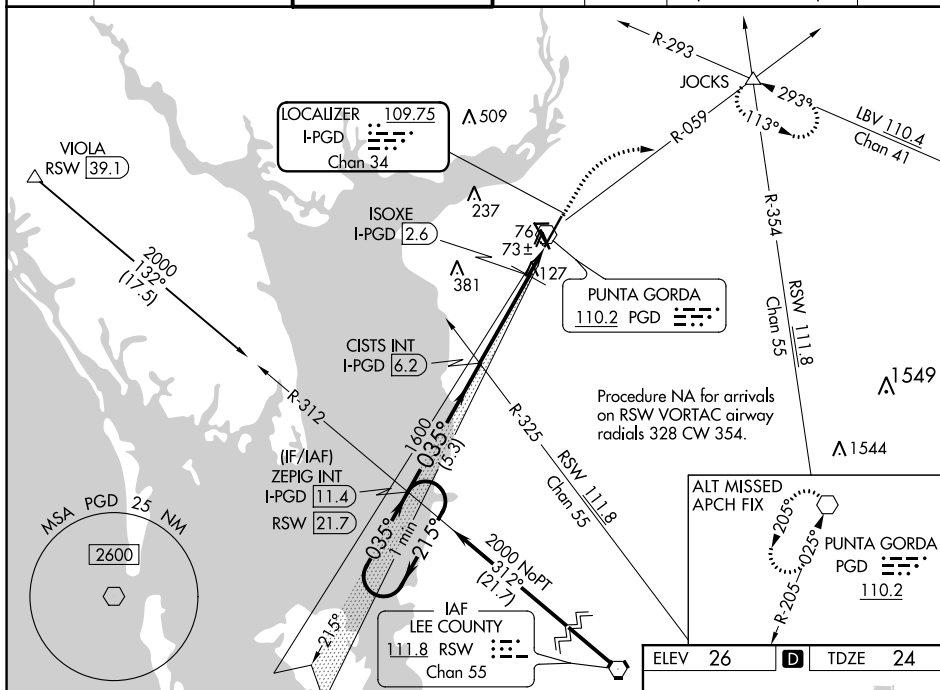
LOC/DME I-PGD 109.75 Chan 34	APP CRS 035°	Rwy Idg 7193 TDZE 24 Apt Elev 26
--------------------------------------------------	------------------------	-------------------------------------------------------------

ILS or LOC RWY 4
PUNTA GORDA (PGD)

T When local altimeter setting not received, use Page Field altimeter setting and increase DA to 274 feet and all MDAs 60 feet; increase S-LOC 4 Cats C and D visibility $\frac{1}{8}$ SM, and Circling Cats C and D visibility $\frac{1}{4}$ SM; ISOXE fix minimums: increase S-LOC 4 Cats C and D visibility $\frac{1}{8}$ SM, and Circling Cats C and D visibility $\frac{1}{4}$ SM.

MISSED APPROACH: Climb to 500 then climbing right turn to 2000 on heading 040° and PGD VOR R-059 to JOCKS INT and hold.

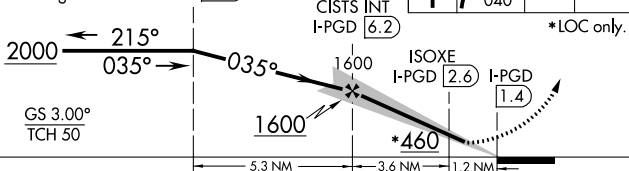
ASOS 135.675	FORT MYERS APP CON ★ 127.05 306.2	PUNTA GORDA TOWER ★ 121.0 (CTAF) 0	GND CON 119.55	CLNC DEL 119.55	CLNC DEL 127.05 (When twr closed)	UNICOM 122.975
-----------------	--------------------------------------	---------------------------------------	-------------------	--------------------	-----------------------------------------	-------------------





*520 When using Page Field altimeter setting.

One Minute Holding Pattern

ZEPIG INT
I-PGD 11.4



CATEGORY	A	B	C	D
S-ILS 4	224-3/4 200 (200-3/4)			
S-LOC 4	460-1	436 (500-1)	460-1 1/4	436 (500-1 1/4)
 CIRCLING	460-1 434 (500-1)	580-1 554 (600-1)	600-1 1/2 574 (600-1 1/2)	740-2 1/4 714 (800-2 1/4)
ISOXE FIX MINIMUMS (DME REQUIRED)				
S-LOC 4	380-1 356 (400-1)			
 CIRCLING	460-1 434 (500-1)	580-1 554 (600-1)	600-1 1/2 574 (600-1 1/2)	740-2 1/4 714 (800-2 1/4)

